



Corpus Christi
REGIONAL ECONOMIC
DEVELOPMENT CORPORATION

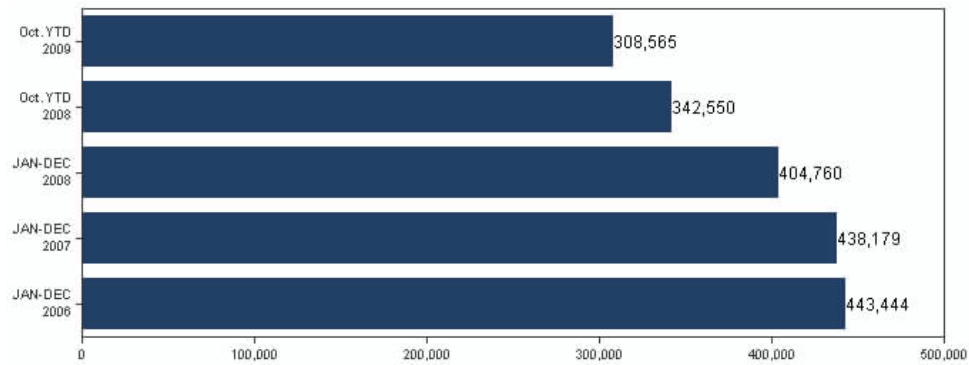
Economic Trends

November 2009

Building Permits	Oct YTD 2009	Oct YTD 2008	2008	2007	2006
CITY OF CORPUS CHRISTI					
New Residential Permits	633	760	848	1,252	1,692
New Residential Valuation	\$81,047,589	\$109,042,109	\$121,972,346	\$148,450,658	\$241,180,554
New Commercial Permits	115	138	160	280	361
New Commercial Valuation	\$55,452,802	\$69,318,800	\$80,363,751	\$108,504,979	\$132,941,420

Source: City of Corpus Christi

Enplanements/Corpus Christi International Airport

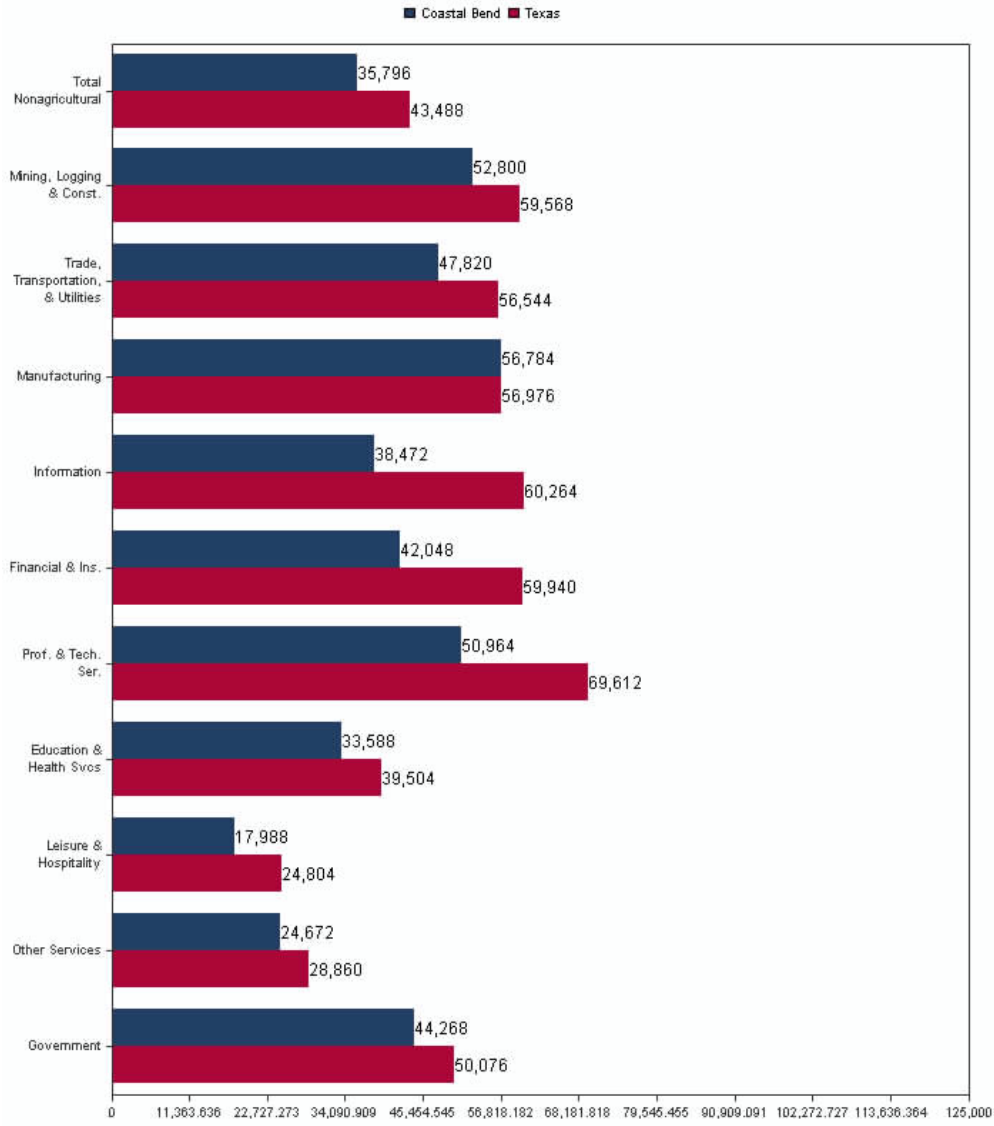


Source: Corpus Christi International Airport

Employment by Sector for Selected Month/Corpus Christi MSA	Oct 09	Sept 09	Oct 08	Oct 07	Oct 06
Total Nonagricultural	177,900	176,100	183,500	179,200	174,800
Mining, Logging, & Const.	19,500	19,700	22,300	21,500	19,900
Manufacturing	10,100	10,1200	11,000	11,100	11,300
Trade, Transportation and Utilities	31,600	31,6900	33,000	31,900	30,700
Information	2,300	2,300	2,400	2,500	2,500
Financial Activities	8,100	8,100	8,200	8,200	8,000
Professional and Business Services	16,300	16,200	17,100	16,400	16,400
Educational and Health Services	29,500	29,300	28,600	26,800	26,200
Leisure and Hospitality	19,900	20,400	20,200	20,400	20,100
Other Services	7,100	7,200	7,100	6,800	6,400
Government	33,500	31,200	33,600	33,600	33,300

Source: Texas Workforce Commission

Average Annual Wages 2nd Quarter 2009 Data

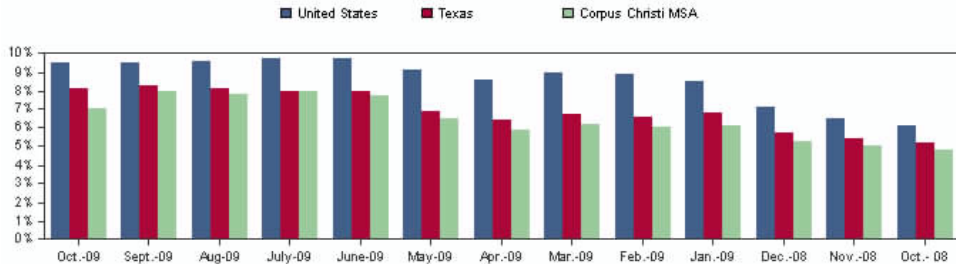


Source: Texas Workforce Commission

Bank Deposits (in millions for June 30 of each year)	2009	2008	2007	2006	2005
Aransas County	\$ 264	\$ 252	\$ 255	\$ 248	\$ 244
Bee County	\$ 238	\$ 236	\$ 214	\$ 210	\$ 199
Jim Wells County	\$ 462	\$ 431	\$ 384	\$ 359	\$ 337
Kleberg County	\$ 293	\$ 272	\$ 271	\$ 243	\$ 229
Nueces County	\$ 3,438	\$ 3,487	\$ 3,273	\$ 3,347	\$ 3,177
San Patricio County	\$ 480	\$ 449	\$ 424	\$ 414	\$ 394

Source: FDIC

Unemployment Rate for 13 month period



Source: Texas Workforce Commission

ACCRA Cost of Living Index / Comparison of Port Cities	2009 2nd Quarter	2009 1st Quarter	2008 1st Quarter	2008 2nd Quarter
Corpus Christi MSA	89.8	93.4	88.0	88.8

Houston, Texas	89.2	89.2	88.2	90.0
Savannah, Georgia	93.6	90.4	95.2	93.7
Mobile, Alabama	93.5	90.3	92.4	94.2
Miami, Florida	110.3	111.0	116.3	115.9
New Orleans, Louisiana	99.9	106.2	99.8	98.4
Baton Rouge, Louisiana *	91.9	-0-	90.9	88.2
Baltimore, Maryland	122.5	119.7	119.7	122.1

National Average = 100

Source: ACCRA

* Did Not Participate

Per Capita Personal Income	2007	2006	2005	2004	2003
Aransas County	\$33,602	\$31,775	\$27,504	\$26,186	\$25,394
Bee County	\$20,887	\$19,366	\$17,564	\$16,715	\$15,695
Corpus Christi MSA	\$33,171	\$31,464	\$28,603	\$27,340	\$26,271
Jim Wells County	\$29,523	\$26,787	\$24,184	\$22,722	\$21,149
Kleberg County	\$28,095	\$26,740	\$24,761	\$22,884	\$21,157
Nueces County	\$33,970	\$32,299	\$29,541	\$28,212	\$26,638
San Patricio County	\$29,272	\$27,452	\$24,674	\$23,698	\$22,669
Texas	\$38,575	\$35,166	\$32,460	\$30,732	\$29,074
United States	\$38,615	\$36,714	\$34,471	\$33,050	\$31,484

Source: Bureau of Economic Analysis

Sales Tax Collection	Nov YTD 2009	Nov YTD 2008	2008	2007	2006
City of Alice	6,950,347.81	9,562,627.56	10,435,433.84	8,760,153.12	8,034,039.45
City of Aransas Pass	1,452,620.48	1,461,704.62	1,606,236.46	1,454,612.30	1,374,689.66
City of Beeville	2,489,798.50	2,530,169.57	2,778,071.52	2,557,163.83	2,382,578.39
City of Corpus Christi	53,081,558.13	56,923,439.52	62,076,565.58	58,502,800.57	55,663,394.57
City of Kingsville	3,522,597.09	3,606,755.91	3,956,992.70	3,762,987.67	3,841,832.18
City of Port Aransas	1,302,270.88	1,248,213.03	1,335,480.81	1,288,341.78	1,263,028.08
City of Portland	2,632,257.01	2,455,172.63	2,936,800.58	2,797,920.99	2,667,625.43
City of Robstown	2,341,507.32	3,059,755.00	3,420,150.91	1,960,066.15	1,636,331.73

Source: Texas Comptroller of Public Accounts