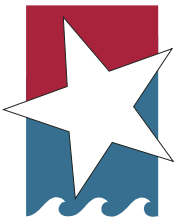


2022

ANNUAL REPORT



Corpus Christi
REGIONAL ECONOMIC
DEVELOPMENT CORPORATION

Mission Statement

The mission of the Corpus Christi Regional Economic Development Corporation is to expand and enhance the region's economic base by developing and/or supporting projects that create primary jobs to improve the diversity and size of the local economy.



Meet the Team



Mike Culbertson
Interim President & CEO
mculbertson@ccredc.com



Pamela Lago
Information Manager
plago@ccredc.com



Brittany Sotelo
VP of Business Retention
& Expansion
bsotelo@ccredc.com



Sarah Tindall
VP of External Affairs
saraht@ccredc.com

Letter From Interim CEO Mike Culbertson

CCREDC Investors and Stakeholders,

Thank you for your support of our mission to bring jobs and investment to the Coastal Bend this year. While our organization has faced its share of challenges over the past 12 months, our commitment to serving our region through our business attraction, economic diversification, business retention and expansion, and quality of place efforts remains steadfast, and I am proud of the successes we have had during this time.

In my 14 years at CCREDC, our region has seen unprecedented growth and economic opportunity. We have talked at length about the \$57 billion in new investment our region has enjoyed, but there are other metrics that also make us proud. Our median income increased from \$41,009 to \$57,387 which shows real progress for both the families who have located here for the new projects that have come to town as well as those of us who have been here for generations. As the number and types of industry that call the Coastal Bend home expand, so has economic opportunity for the young people coming of age in the area. These new jobs are tech forward instead of heavily labor intensive, giving workers a chance to learn new skills and engage in the global tech economy while providing a living wage for families right here in our own backyard. These new industries include the transformative steel campus that now calls Sinton home but also the

burgeoning drone and mid-sized manufacturing industries.

With the Manufacturing Renaissance we are enjoying has come a cultural renaissance as well. A renewed vigor characterizes our region's arts community; the downtowns of Corpus Christi, Portland, Rockport, Port Aransas, and Sinton are vibrant with new residents, shops, and restaurants; and a doubling of the student population at

Texas A&M University- Corpus Christi and their engagement in the business and social fabric of the community are making us all more enthusiastic than ever about the privilege of living in our beautiful corner of the world.

I have enjoyed this time serving as CEO and thank everyone for the support and collaboration as we navigated through this year's challenges and opportunities. I look forward to renewed vibrancy in our own organization next year as our new President and Chief Executive Officer takes the reins and charts a new course for the economic future of the Coastal Bend. With dynamic and bold

new leadership, strategic and collaborative community planning and engagement, and a commitment by our local private and public sector to capitalizing on the wealth of opportunity provided by our location, infrastructure, and hardworking population, I see a great future ahead for CCREDC and the Coastal Bend.

Sincerely,
Mike Culbertson



2022 Board of Directors

The CCREDC Board of Directors is comprised of seven elected investor representatives as well as appointees from the City of Corpus Christi, San Patricio County, Nueces County, and the City of Portland as well as ex-officio members representing the United Corpus Christi Chamber of Commerce, the Corpus Christi Black Chamber of Commerce, WorkForce SOLUTIONS, the City of Robstown, the San Patricio County Economic Development Corporation, Texas A&M University - Corpus Christi, and Del Mar College.

Chairman
William Goldston
WFGCON, LLC

Vice Chairman
Judith Talavera
AEP Texas

Secretary
Dr. Bryan Gulley
Port of Corpus Christi Authority

Immediate Past Chair
Chris Hamilton
Victory Building Team

Treasurer
Bobby Gonzales
Gonzales Law

**Business Development
Advisory Committee Chairman**
Philip Ramirez
Turner Ramirez Architects

**City of Corpus Christi
Representative**
Paulette Guajardo
City of Corpus Christi Mayor

City of Corpus Christi Representative
Greg Smith
City Councilman

City of Corpus Christi Representative
Chad Magill
Buchanan Title

City of Corpus Christi Representative
Dr. Vishnu Reddy
City of Corpus Christi

City of Portland Representative
Cathy Skurow
City Of Portland Mayor

San Patricio County Representative
Judge David Krebs
San Patricio County Judge

Nueces County Representative
Barbara Canales
Nueces County Judge

Investor Representative
Anna Aldridge
Hanson

Investor Representative
Adam Phillippi
MMR

Investor Representative
Eric Evans
Corpus Christi Medical Center

Investor Representative
Kevin Lassahn
Valero

Port Corpus Christi Representative
Rajan Ahuja
Magnum Producing

Ex-Officio Member
Peter Zanoni
City of Corpus Christi

Ex-Officio Member
Sean Strawbridge
Port of Corpus Christi Authority

Ex-Officio Member
Dr. Kelly Miller
Texas A&M University - Corpus Christi

Ex-Officio Member
Lenora Keas
Del Mar College

Ex-Officio Member
Ken Trevino
Workforce Solutions

Ex-Officio Member
Mayor Jo Ann Ehmann
San Patricio County EDC

Ex-Officio Member
Gilbert Gomez
Mayor of Robstown

Ex-Officio Member
Brett Oetting
Visit Corpus Christi

Ex-Officio Member
John La Rue
United Corpus Christi Chamber

Ex-Officio Member
Curtis Clark
Corpus Christi Black Chamber



Business Development Advisory Committee

AEP Texas
AGCM
ARDURRA
Air Liquide
American Bank
Bay Ltd.
Braselton Development
Buckeye Partners
CHRISTUS Spohn
Cheniere
CITGO
Corpus Christi Hooks
Corpus Christi Medical Center

Driscoll Children's Hospital
Gulf Coast Growth Ventures
Hanson
HDR
H-E-B
IBC Bank
Jones Walker
Kleberg Bank
Landlord Resources
McCarthy Building
MMR Group
Performance Contractors
Radiology Associates

Reytec
Rock Engineering
Steel Dynamics
Stewart Title
Terracon
Turner Industries
Turner Ramirez Architects
TXU Energy
Unique HR
Valero
Victory Building
Worley

Important Dates

Senior Executive Breakfast Dates

8:00 a.m.
January 10
February 7
March 7
April 11
May 9
June 6
July 11
August 8
September 12
October 10
November 7
December 12

CCREDC Board Meetings

8:00 a.m.
January 12
February 9
March 9
April 13
May 11
June 8
July 13
August 10
September 14
October 12
November 9
December 14



Targeted Industry Study

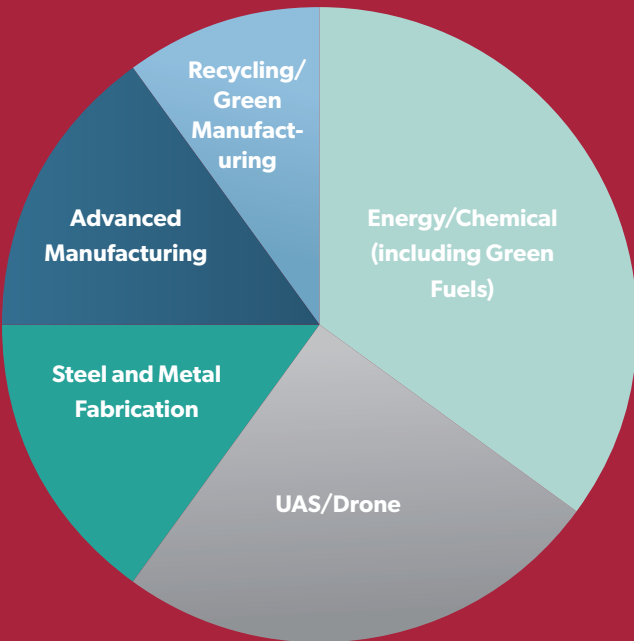
It's been two years since the 2022 Newmark targeted industry was presented to the CCREDC board and staff but the CCREDC began implementation of the new recommended sectors in early 2021 and its work is reflective of the diversity of the sectors in the current project portfolio looking at the Coastal Bend. Whereas the majority of the project portfolio was energy and chemical-related in 2019-2020, only a little more than a third of the current project portfolio is chemical/energy (including new hydrogen fuels) and the rest in new targeted sectors like steel/metal fabrication, UAS/drone, and green recyclables manufacturing.

Newmark Additional Sector to Pursue

Small and Mid-Sized Manufacturing (Including Advanced)
Plastic Products Manufacturing
Fabricated Metals Manufacturing
UAS (drones) and Aerospace

Portfolio of Current Projects Snapshot

- Energy/Chemical (including Green Fuels) 35%
- UAS/Drone 25%
- Steel and Metal Fabrication 15%
- Advanced Manufacturing 15%
- Recycling/Green Manufacturing 10%



Recent investments in the local community to grow these targeted sectors include:

-\$4 million from the Corpus Christi Type B Incentive Fund for new downtown command center for Lone Star UAS Center TAMU-CC-downtown command center (drones). This will diversify our economy and establish us a center for drone testing and innovation. Companies to locate here to earn FAA certification for their drone platforms and drone crews.

-\$2 million-Type A- TAMU-CC-Civil/Industrial Energy Program at TAMU-CC (energy)

-\$2 million TAMU-CC-Electrical Engineering Program at TAMU-CC (electrical/advanced manufacturing)

-\$4.0 Process Technology Program-Del Mar College (chemical processing)

Flipping Your Coast Recruitment

The Newmark Targeted Industry Study along with the completed "Our Coastal Bend" Quality of Place study completed in 2021 provided community recommendations in helping with the recruitment of new technology-based, small privately owned companies with West Coast roots looking for a Texas location. CCREDC staff is pitching the Coastal Bend as an alternative to the West Coast with the "Flip Your Coast" campaign and is working several west coast-based projects.



Quality of Place Initiatives

In August of 2020, CCREDC launched a community attachment study titled "Our Coastal Bend: Creating our Best Place for People and Prosperity" through a partnership with Place + Main Advisors. The purpose of this project is to invest resources into creating the sense of place increasingly important to attracting and retaining people in the region.

Phase I of the survey has been completed, with a representative sample of area residents responding to a survey from September through November to assess attachment to the region. Phase II began January 2021, using quantitative and qualitative data to identify market specific drivers of attachment and the strengths, gaps, and improvements that can be made to enhance these assets in the region.

In 2022, Joe Borgstrom of Place + Main Advisors spoke to the Quality of Place Stakeholders group as well as the CCREDC Investors and the Corpus Christi City Council to discuss key recommendations and implementation strategies moving forward. The Stakeholder group met again October 1 to continue implementation plans.

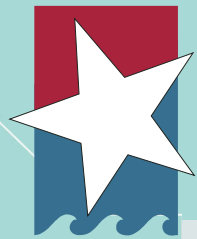


Recommendations Summary

- Talent Retention Programs
- 2,000 Additional Downtown Residential Units
- Public Park + Beachfront Activation
- Increased Mixed Use Neighborhoods
- Walkable Neighborhood Design/Zoning Standards + Incentives
- Blighted Properties Program
- Litter Campaigns
- Pothole Repair Warranties
- Public Art Programs
- Festivals + Events
- Social Offerings/Community Concierge for Trailing Spouses/Job Programs
- TAMU-CC Presence Downtown Anchor
- Del Mar College Tuition Programs for local High School Graduates

Stakeholders:

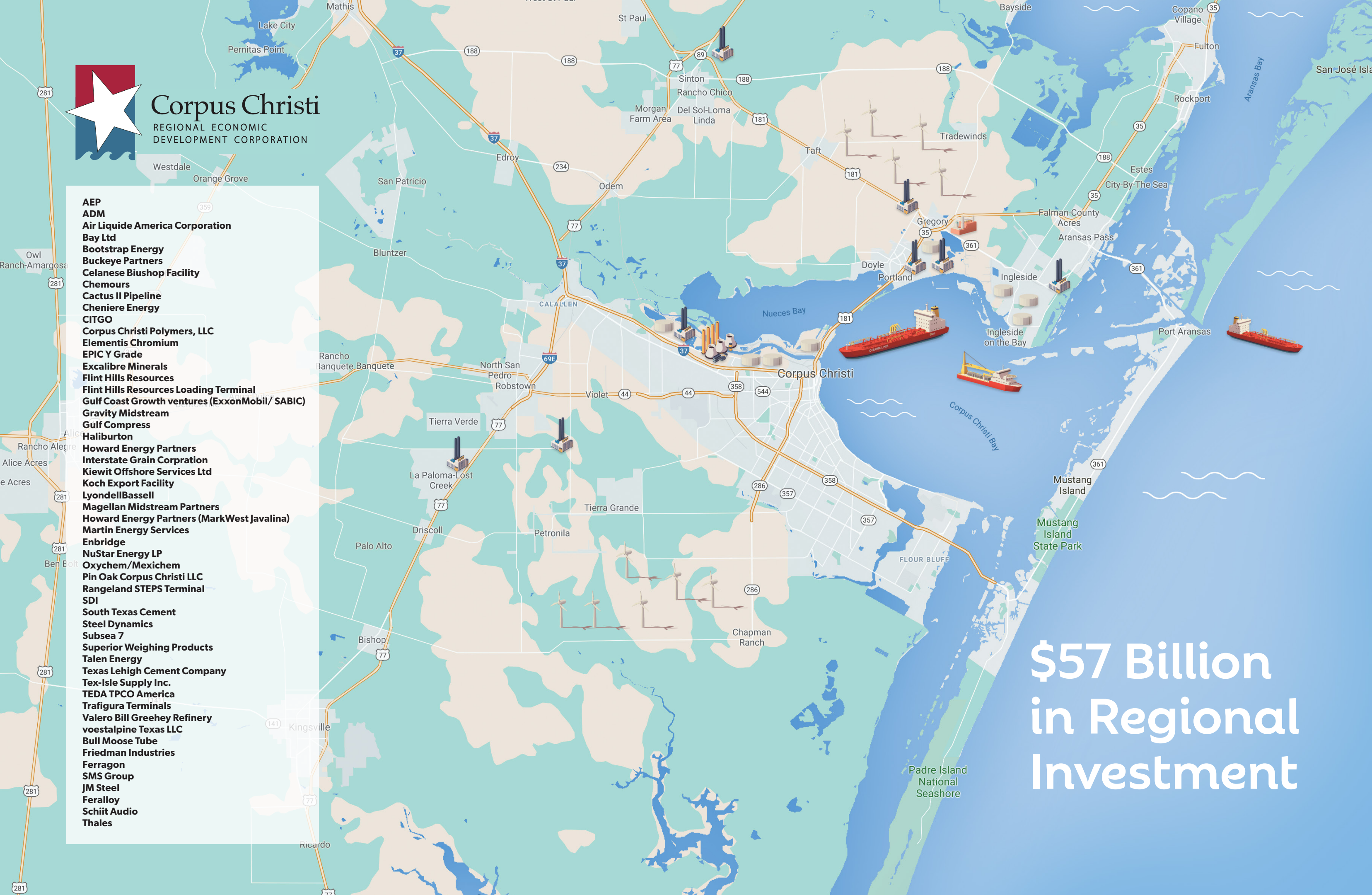
Art Center of Corpus Christi
Art Museum of South Texas
City of Corpus Christi
City of Portland
City of Rockport/ Fulton
Coastal Bend Innovation Center
Corpus Christi Downtown Management District
Del Mar College
Portland Chamber of Commerce
Rockport Chamber of Commerce
Texas A&M University- Corpus Christi
United Corpus Christi Chamber of Commerce
Visit Corpus Christi
Young Business Professionals of the Coastal Bend



Corpus Christi

REGIONAL ECONOMIC
DEVELOPMENT CORPORATION

AEP
ADM
Air Liquide America Corporation
Bay Ltd
Bootstrap Energy
Buckeye Partners
Celanese Biushop Facility
Chemours
Cactus II Pipeline
Cheniere Energy
CITGO
Corpus Christi Polymers, LLC
Elementis Chromium
EPIC Y Grade
Excalibre Minerals
Flint Hills Resources
Flint Hills Resources Loading Terminal
Gulf Coast Growth ventures (ExxonMobil/ SABIC)
Gravity Midstream
Gulf Compress
Haliburton
Howard Energy Partners
Interstate Grain Corporation
Kiewit Offshore Services Ltd
Koch Export Facility
LyondellBassell
Magellan Midstream Partners
Howard Energy Partners (MarkWest Javalina)
Martin Energy Services
Enbridge
NuStar Energy LP
Oxychem/Mexichem
Pin Oak Corpus Christi LLC
Rangeland STEPS Terminal
SDI
South Texas Cement
Steel Dynamics
Subsea 7
Superior Weighing Products
Talen Energy
Texas Lehigh Cement Company
Tex-Isle Supply Inc.
TEDA TPCO America
Trafigura Terminals
Valero Bill Greehey Refinery
voestalpine Texas LLC
Bull Moose Tube
Friedman Industries
Ferragon
SMS Group
JM Steel
Feralloy
Schiit Audio
Thales



\$57 Billion
in Regional
Investment

Recent Area Projects Won

CAPTIAL INVESTMENT		CAPTIAL INVESTMENT	
Academy	6,000,000	LyondellBassell	500,000,000
Adler Scaffolding	2,000,000	M&G Group	750,000,000
ArcelorMittal (voestalpine)	770,000,000	Magellan Midstream Partners	350,000,000
Baker Hughes	4,500,000	MarkWest Javalina	80,000,000
BASF	55,000,000	National Oilwell VARCO	21,000,000
Bay Vista II	17,960,000	Net Zero	25,000,000
Bootstrap	2,250,000	Occidental Chemical	1,300,000,000
Bootstrap Energy	1,000,000,000	Occidental Petroleum	58,500,000
Bull Moose Tube	2,750,000	Ortiz Construction	750,000
C.C. Cold Storage	2,400,000	Oxy Petroleum	100,000,000
CamRet	5,000,000	Plains American	100,000,000
Capital	24,000,000	PV Rentals	1,000,000
Celanese	150,000,000	QSROnline	400,000
Chemours	245,000,000	Radiology Associates	6,000,000
Cheniere	4,500,000,000	Rangeland Energy	100,000,000
Cheniere	14,500,000,000	Results	100,000
Christian Brothers	1,200,000	Schiit Audio	1,000,000
Coast Guard	45,000,000	SMS Group	4,800,000
Commercial Metals Company	25,000,000	Steel Dynamics	1,800,000,000
Cosmopolitan	20,000,000	Strike Pumps	500,000
Development 2000	5,000,000	STX Beef Processors	1,000,000
Eagle Materials	22,000,000	Superior Weighing	18,000,000
Envirotech Carriers	500,000	SWC Group	500,000
EPIC Y Grade	200,000,000	TAMU-CC (FAA Center)	1,000,000
Ferragon	1,500,000	TEDA - TPCO	1,000,000,000
Flint Hills	350,000,000	Tex-Isle	50,000,000
Friedman Industries	3,000,000	TexStar	97,000,000
GE Dresser	1,000,000	Thomas Petroleum	50,000,000
Govind Development	2,100,000	ThyssenKrupp	3,250,000
Gravity Mid-Stream	200,000,000	Topaz Power	860,000,000
Groomers	5,000,000	Trafigura, Martin Mid-Stream	800,000,000
Gulf Coast Growth Ventures	9,458,000,000	Triumph	1,000,000
Hausman Foods	2,100,000	US Border Patrol	1,400,000
HEB Bakery	17,700,000	Valero	250,000,000

CCREDC Type B Support

The Corpus Christi B Corporation collects 1/8th percent sales tax. This was passed in 2018 to replace the Type A economic sales tax that helped pay for Whataburger Field and many Type A business incentives and affordable housing. 50% of Type B fuds will be used for economic development projects, \$500,000 annually for affordable housing, and the rest to streets that are designated arterials and collectors.

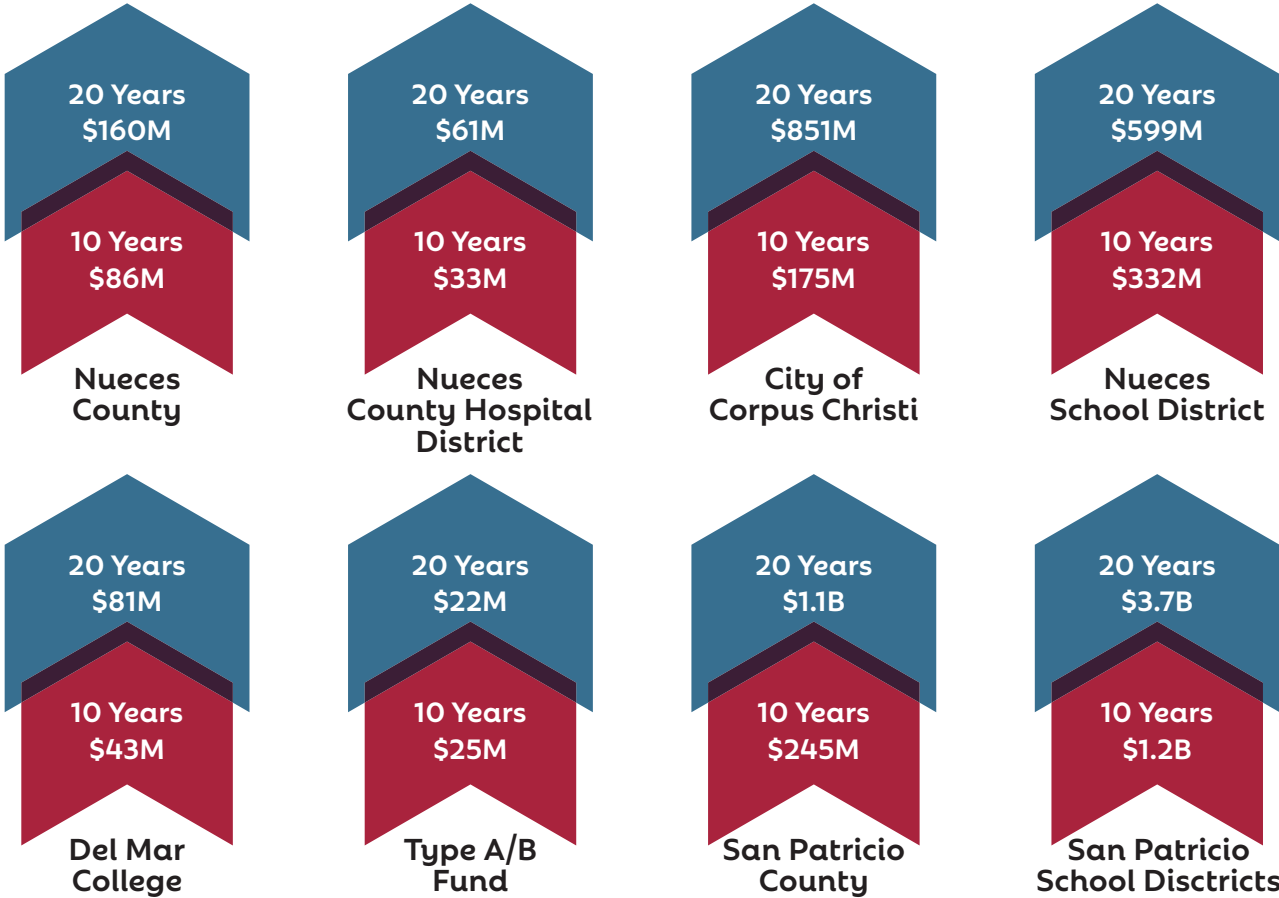
The EDC has provided staffing for the Type A and now Type B Board since its inception. A project fills out an application for incentives. If they were eligible, the application would be presented to the CCREDC Board of Directors. Our Board would forward a recommendation of approval or disapproval to the Type B Board. If the Type B Board approved the grant and the agreement, the agreement would go to the City Council for allocation of the grant money. There have been

twenty-nine grants that have been completed and there are currently nine large active projects. These projects have received \$28 million in grants and invested over \$108 million and created 1,078 jobs. The Type B also provide funding for seven Small Business Assistance Programs. These small business assistance programs include: internships programs that match students at both Del Mar College and Texas A&M University with small businesses to work as interns; Service Corps of Retired Executives for mentoring small businesses, LiftFund, a micro-lender for those companies having trouble getting business loans from banks, Del Mar College government procurement known as PTAC, large business procurement center called CRC and the Small Business Development Center business counsellors.

Each of these agreements require that the EDC complete the compliance on them before any money is paid.

Community Impact

\$52 Billion in Cap Ex: What it means for our local taxing entities?
These taxes are net of any incentive offered. Assumed the time to complete schedule doesn’t move appreciatively. City of Corpus Christi includes the industrial district PILOT payments



2022 Business Retention and Expansion Report

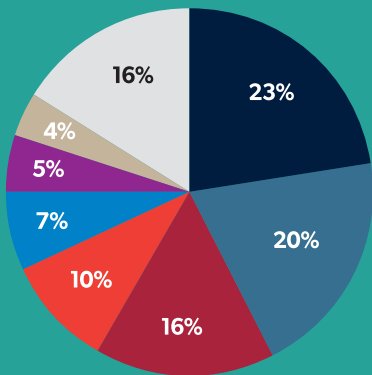
Business Retention & Expansion (BR&E) is an economic development strategy of proactively connecting with existing businesses to understand and respond to their needs.

80% of a region's growth comes from expansion of existing businesses.

Staff conducts interviews every month with businesses to collect data and provide the best resources for their overall success.

THE BRE REPORT REFLECTS DATA COLLECTED FROM INTERVIEWS WITH CCREDC STAFF AND EXISTING BUSINESS C-SUITE EXECUTIVES, OWNERS OR HUMAN RESOURCE MANAGERS.

2022 BRE Visits: **83**



Industries by NAICS Codes:

- 238 - Contractors - Special Trade
- 339 - Miscellaneous Manufacturing
- 332 - Fabricated Metal Product Manufacturing
- 325 - Chemical Manufacturing
- 331 - Primary Metal Manufacturing
- 211 - Oil and Gas Extraction
- 541 - Professional (Business), Scientific, & Technical Services
- Other

Top Business Challenges Post Covid-19: 1. Supply Chain 2. Workforce 3. Inflation

43%

of businesses that indicated expansion plans in 2022

53%

of companies indicated their key product(s) market share was stable or increasing



Supply Chain:

63%

of businesses experienced supplier disruptions causing slow delivery of product to their customers

RESILIENT:

Despite the economic effects of COVID-19 and the Russia-Ukraine War, Coastal Bend businesses exhibited resilience and creativity while experiencing delays in receiving raw materials and incorporating increased prices into their everyday operations.

Reported materials with delays or increased prices:

Supplies and Materials	Equipment	Metals
Filters	Compressors	Nickel
Natural Gas	Cooking and Refrigeration Equipment	Round Bar
Concrete	Asphalt Compactors	Aluminum
Hydraulic parts	Fork Lifts	Steel
Motors	Cranes	Iron
Pumps		
AC Coils		
Semiconductors (Chips)		
Flex Duct		
Nuts and bolts		



Workforce: **29%**

of businesses lost or were at risk of losing high value employees

TENACIOUS:

As the aftermath of the pandemic continued in 2022, company leaders effectively adjusted to managing employees affected by Covid-19, long-term and skilled employees choosing to retire, and finding and placing employees for empty management and skilled positions.

Top jobs in demand:

FABRICATORS
HVAC TECHNICIANS
ENGINEERS
CDL DRIVERS
GENERAL LABORERS
MACHINISTS
EQUIPMENT OPERATORS
MECHANICS
MARITIME RELATED POSITIONS

Effective Recruitment and Retention Strategies:

- Targeted digital advertising campaigns via job posting sites (indeed.com).
- Hiring interns and graduates from Del Mar College and TAMUCC.
- Implementing a family-oriented culture and flexible work schedules for employees.
- Hiring staffing agencies to source additional networks of skills employees.
- Apprenticeships programs through Del Mar and Craft Training Center.



Utility and Community:

How do company leaders rate the region's utility and community services? Listed are comments from respondents.

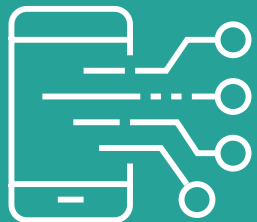
LACK OF SHIPPING CONTAINER PORT
DAYCARE CENTER OPTIONS
BETTER MARKETING OF COMMUNITY EVENTS
DROUGHT RESTRICTIONS
LOW COST OF LIVING
BETTER PUBLIC TRANSPORTATION SCHEDULES
ROAD INFRASTRUCTURE: POTHOLES
LACK OF RETAIL SHOPPING
BUSINESS FRIENDLY COMMUNITY
PERMITTING PROCESS AND ZONING CHANGES
HIGH ENERGY COSTS
QUALITY OF LIFE
DRAINAGE FEES
FEDERAL ENVIRONMENTAL AUDIT CONCERNS
THE COMMUNITY IS GREAT!
CRIME
AGING INFRASTRUCTURE
INTERNET STABILITY

Top Requested Assistance:

1. Employee training programs
2. Grant funding for specialized workforce training
3. Supply chain assistance

Technology:

Many companies are investing in new technologies including electric tractors, software programs for inventory tracking and implementing solar equipment into their manufacturing processes.



In response to the top business challenges, CCREDC staff collaborated with regional partners to plan programming including the:

- Upskill Coastal Bend Employer Forum
- Coastal Bend Manufacturing Day Expo

CCREDC 2022 Calendar of Events

IN RESPONSE TO THE TOP BUSINESS CHALLENGES, CCREDC STAFF COLLABORATED WITH REGIONAL PARTNERS TO PLAN PROGRAMMING INCLUDING:

Economic Trends Panel Event: Steel Manufacturing in the Coastal Bend

April 27, 2022, Congressman Solomon P. Ortiz International Center

Panelists:
Uwe Leopold, Voestalpine
Dennis Black, Steel Dynamics
Steven McGee, ThyssenKrupp
Billy Sias, Texslsle



Upskill Coastal Bend Employer Forum

June 9, 2022
Ortiz Center

Topics Discussed:
Grants For Training
Internships
Apprenticeships
CCISD CTE Programs
Workforce Resources



Coastal Bend Manufacturing Day Expo & Keynote



The CCREDC hosted the region’s first National Manufacturing Day Expo featuring Jake Hall, “The Manufacturing Millennial,” as keynote speaker on October 7, 2022 in partnership with PNC Bank. In response to national supply chain challenges, the expo showcased Coastal Bend manufacturers and resource partners to provide networking opportunities, exhibit the region’s capabilities, and promote workforce development and attraction.



Annual Meeting 2022

January 26, 2022
Texas A&M Corpus Christi
Performing Arts Center



Investor Spotlight

We would like to take a moment to thank every investor for the success of this year. Featured here in this section are the incredible companies that have offered their continued support to expand, grow, and aid the Coastal Bend Region. If you would like to become one of our featured sponsors, please contact Sarah Jacobi Tindall at saraht@ccredc.com or call 361-882-7448

EXECUTIVE INVESTORS



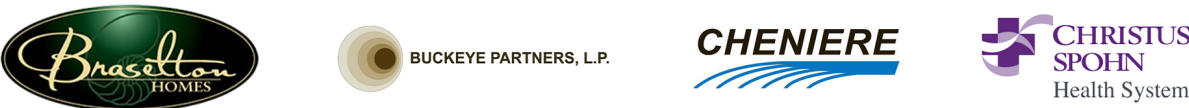
INDUSTRY LEADER INVESTORS



COMMUNITY STAKEHOLDER



PRINCIPAL INVESTORS



Investor Directory

Accounting/Auditing

Buckley and Associates, P.C.
101 N Shoreline Blvd. Ste. 500
Corpus Christi, TX 78401
361-883-1871
ba-cpa.com

Perrone, Trigger & Associates, PC
500 N. Shoreline Blvd, Ste. 502
Corpus Christi, TX 78401
361-888-5151
perronettrigger.com

Architectural Services

Richter Architects
201 S. Upper Broadway
Corpus Christi, TX 78401
361-882-1288
richterarchitects.com

Turner|Ramirez Architects
5525 S. Staples, Suite A-7
Corpus Christi, TX 78411
361-994-8900
trarch.com

Arts, Entertainment, and Media

Astound
6441 Saratoga Blvd.
Corpus Christi, TX 78414
866-247-2633
astound.com

KRIS Communications
301 Artesian St.
Corpus Christi, TX 78401
361-886-6100
kristv.com

Texas State Aquarium
2710 North Shoreline
Corpus Christi, TX 78402
361-881-1254
texasstateaquarium.org

Automotive/Motor Vehicle/Parts

Ed Hicks Family of Dealerships
3000 South Padre Island Drive
Corpus Christi, TX 78415
361-654-1955
edhicks.com

Banking/Mortgages

1st Community Bank
416 Water St.
Corpus Christi, TX 78401
361-882-9310
fcbot.com

American Bank
800 N. Shoreline Blvd.
Ste. 200 S
Corpus Christi, TX 78401
(800) 257-8316
americanbank.com

Charter Bank
801 Navigation
Corpus Christi, TX 78408
361-241-7681
charterbankcc.com

Frost Bank
501 S. Shoreline Blvd.
Corpus Christi, TX 78401
361-844-1010
frostbank.com

International Bank of Commerce
221 S. Shoreline Blvd.
Corpus Christi, TX 78401
361-888-4000
ibc.com

Kleberg Bank
5350 S. Staples St.
Corpus Christi, TX 78411
361-850-6819
klebergbank.com

NavyArmy Community Credit Union
5725 Spohn Dr.
Corpus Christi, TX 78414
361-986-4500
navyarmyccu.com

Plains Capital Bank
500 N. Shoreline Blvd., Ste. 200
Corpus Christi, TX 78401
361-939-5602
plainscapital.com

PNC
101 N Shoreline Blvd. Ste. 100
Corpus Christi, TX 78401
361-903-1281
pnc.com

Prosperity Bank
921 N. Water St.
Corpus Christi, TX 78401
361-387-5280
prosperitybankusa.com

Randolph-Brooks Federal Credit Union
5253 S. Staples St.
Corpus Christi, TX 78411
361-215-1296
rbfcu.org

ValueBank Texas
3649 Leopard Street
Corpus Christi, TX 78408
361-851-9390
valuebanktexas.com

Chamber of Commerce

Corpus Christi Black Chamber of Commerce
3209 S Staples Room 113
Corpus Christi, TX 78411
361-815-8346
blackchambercc.org

Commercial Construction/General Contractors

Bay Ltd/A Berry Company
1414 Corn Products Rd.
Corpus Christi, TX 78409
361-561-4665
bayltd.com

Braselton Development Co.
5337 Yorktown Blvd
Corpus Christi, TX 78413
361-991-4710
braseltonhomes.com

Hogan Homes
1301 Antelope St.
Corpus Christi, TX 78401
361-214-5719
hoganhomestexas.com

McCarthy Building
15415 Market St.
Channelview, TX 77530
361-360-7229
mccarthy.com

MPM Homes
6722 Brockhampton St.
Corpus Christi, TX 78414
361-774-3832
mpmhomes.net

Victory Building Team
711 Cantwell
Corpus Christi, TX 78408
361-991-5600
victorybuildingteam.com

Computer Services

Celeix Digital
5709 Narsonne St.
Corpus Christi, TX 78414
celeix.digital

Knight Office Solutions
6980 Leopard St.
Corpus Christi, TX 78409
361-887-7056
knightoffice.com

Construction, Industrial

Beecroft Construction
2222 Laredo Street
Corpus Christi, TX 78405
361-882-6791
beecroftconstruction.com

Cajun USA
15635 Airline Hwy
Baton Rouge, LA 70817
225-753-5857
cajunusa.com

Caliber Solutions
4850 Lafin Dr.
Beaumont, TX 77705
409-554-0800
calibersolutions.com

Coonrod Electric Co.
213 N. Rachal
Sinton, TX 78387
361-945-7236
coonrodelectric.com

Industrial Specialists LLC
222 Gilliam St.
Corpus Christi, TX 78409
361-360-3214
indspec.com

International Brotherhood of Electrical Workers Local Union 278
2301 Saratoga Blvd
Corpus Christi, TX 78417
361-855-1084
ibew278.org

MMR Group
2033 FM 2725
Ingleside, TX 78362
361-758-4019
mmrgroup.com

Performance Contractors, Inc.
1599 N. Lexington
Corpus Christi, TX 78409
361-692-6618
performance-contractors.com

Reytec
718 S Navigation Blvd.
Corpus Christi, TX 78405
361-502-1932
reytec.net

State Service
919 Bishop Road
Ingleside, TX 78362
361-776-7399
stateservice.com

South Texas Building Construction Trades Council
2301 Saratoga Blvd.
Corpus Christi, TX 78417
361-855-1084
texasbuildingtrades.org

Turner Industries
8601 Interstate Hwy. 37
Corpus Christi, TX 78409
361-248-3183
turner-industries.com

Consulting Services

AG|CM, Inc.
1101 Ocean Dr.
Corpus Christi, TX 78404
361-882-0469
agcm.com

Engel & Associates LLC
800 N. Shoreline Blvd.,
Ste. 2200 N.
Corpus Christi, TX 78401
361-883-5535

Urban Logistics Advisory Services
6329 Airport Freeway Suite C
Fort Worth, TX 76117
646-384-2353
ulainc.com

Education, Training, and Library

Del Mar College
101 Baldwin Blvd.
Corpus Christi, TX 78404
361-698-1200
delmar.edu

Texas A&M University-Corpus Christi
6300 Ocean Dr. Unit 5741
Corpus Christi, TX 78412
361-825-5700
tamucc.edu/

Employment Placement Agencies

L.K. Jordan & Associates
321 Texan Trail
Corpus Christi, TX 78411
361-814-9700
lkjordan.com

Sterling Personnel, Inc.
3833 S. Staples Street,
Ste. N103
Corpus Christi, TX 78411
361-854-5151
sterlingpersonnelinc.com

Unique HR
4646 Corona, Ste. 100
Corpus Christi, TX 78411
361-852-6392
uniqueemployment.com

Workforce Solutions of the Coastal Bend
520 N. Staples Street
Corpus Christi, TX 78401
361-225-1098
workforcesolutionscb.org

Energy/Utilities

AEP Texas
P.O. Box 2121
Corpus Christi, TX 78403
887-373-4858
aeptexas.com

Calpine Energy Solutions, LLC
717 Texas Ave. #1000
Houston, TX 77002
832-530-1113
calpinesolutions.com

EPIC Y Grade Logistics LP
500 N. Shoreline Blvd. Ste.811
Corpus Christi TX, 78401
830-965-6966
epicpipelinepl.com

Powering Coastal Texas
2825 Wilcrest Dr. Ste. 303
Houston, TX 77042
713-977-2522
poweringcoastaltexas.com

TXU Energy
2603 Augusta Dr. Ste. 300
Houston, TX 77057
713-953-6083
txu.com

Investor Directory

Engineering

ARDURRA
801 Navigation, Suite 300
Corpus Christi, TX
361-883-1984
ardurra.com

Halff Associates
711 N. Carancahua St. Ste. 1190
Corpus Christi, TX 78401
361-400-0981
halff.com

Hanson Professional Services, Inc.
4501 Gollihar Rd.
Corpus Christi, TX 78411
361-814-9900
hanson-inc.com

HDR
555 N. Carancahua Street
Ste. 1600
Corpus Christi, TX 78401
361-779-1971
hdrinc.com

Kingham Dalton Wilson, Ltd.
5858 Westheimer Suite 1500
Houston, TX 77057
713-920-9543
kdwltd.com

Lanier & Associates Consulting Engineers
500 N. Shoreline Blvd. Ste.350
Corpus Christi, TX 78401
361-402-6996
lanier-engineers.com

LJA Engineering
5350 South Staples #425
Corpus Christi, TX 78411
361-991-8550
lja.com

NRG Engineering
5656 S. Staples
Corpus Christi, TX 78411
361-852-2727
nrgcc.com

Raba Kistner, Inc.
1959 Saratoga Blvd. Bldg. 11
Corpus Christi, TX 78417
281-520-9883
rkci.com

Richard Industrial Group
210 S. Carancahua Street
Corpus Christi, TX 78401
361-249-0059
richardig.com

Rock Engineering
6817 Leopard St.
Corpus Christi, TX 78409
361-883-4555
rocktesting.com

Terracon
3606 WOW Rd.
Corpus Christi, TX 78413
361-420-6023
terracon.com

Tolunay-Wong Engineers
826 S. Padre Island Dr.
Corpus Christi, TX 78416
713-458-0151
tweinc.com

WFGCON
13721 Tajamar
Corpus Christi, TX 78418
713-828-5701

Worley
1992 Lewis Turner Blvd.
Ft. Walton, FL 32547
850-585-9107
worley.com

Environmental Services

Whitenton Group
3413 Hunter Rd.
San Marcos, TX 78666
512-353-3344
whitentongroup.com

Farming Industry

Gulf Compress
201 N. 19th St.
Corpus Christi, TX 78408
832-625-9375
gulfcompress.com

Jeff McKamey
361-643-2685

Financial Services

Coastal Bend Wealth Partners
800 N. Shoreline Blvd.,
Ste. 1350
Corpus Christi, TX 78401
361-886-7500
raymondjames.com/coastal-bendwealthpartners/about-us

Susser Holdings II
800 N. Shoreline Blvd.,
Ste. 2200 N.
Corpus Christi, TX 78401
361-884-2463

Food & Beverage Processing/ Distribution

H-E-B
4444 Kostoryz Rd., Ste. 101
Corpus Christi, TX 78415
361-241-2777
heb.com

Oneta Corp.
1401 S.P.I.D.
Corpus Christi, TX 78416
361-654-3166
onetacc.com

Government

City of Corpus Christi
1201 Leopard Street
Corpus Christi, TX 78401
361-826-3100
cctexas.com

City of Portland
1900 Billy G. Webb Dr., Ste. 220
Portland, TX 78374
361-777-4500
portlandtx.com

Corpus Christi Regional Transporation Authority
602 N. Staples St.
Corpus Christi, TX 78401
361-289-2712
ccrta.org

Nueces County
901 Leopard Street, Room 303
Corpus Christi, TX 78401
361-888-0264
co.nueces.tx.us

Port Corpus Christi
400 Harbor Dr.
Corpus Christi, TX 78403
361-885-6189
portofcorpuschristi.com

San Patricio County
400 W. Sinton St., Rm. 109
Sinton, TX 78387
361-364-9300
co.san-patricio.tx.us

Healthcare

CHRISTUS SPOHN Health System
613 Elizabeth St
Corpus Christi, TX 78401
361-881-3000
christusspohn.org

Corpus Christi Medical Center
3315 S. Alameda Street
Corpus Christi, TX 78411
361-761-1501
ccmedicalcenter.com

Driscoll Children’s Hospital
3533 South Alameda
Corpus Christi, TX 78411
361-694-5000
driscollchildrens.org

Radiology Associates
1812 S. Alameda St.
Corpus Christi, TX 78404
361-561-3122
xraydocs.com

Hospitality/Tourism

Omni Corpus Christi Hotel
900 North Shoreline Blvd.
Corpus Christi, TX 78401
866-238-4218
omnihotels.com/hotels/corpus-christi

ZJZ Hospitality
1410 Crescent Dr.
Corpus Christi, TX 78412
361-855-1549
zjzhospitality.com

Information Technology

HighTouch Technologies
711 North Carancahua St.,
Ste. 1500
Corpus Christi, TX 78401
361-993-1790
hightouchinc.com

Insurance

Carlisle Insurance Agency
500 N. Water St. Suite 900
Corpus Christi, TX 78401
361-884-2775
carlisleins.com

Higginbotham/Swantner & Gordon Insurance Agency
500 N. Shoreline Blvd. Ste. 1200
Corpus Christi, TX 78403
361-883-1711
higginbotham.net/corpus-christi

State Farm Agent Bobby Hyatt
3636 S. Alameda St. Ste. K
Corpus Christi, TX 78411
361-993-9350
bobbyhyatt.com

Investments

REP Holdings, LLC.
P. O. Box 9609
Corpus Christi, TX 78469
361-774-1108
repcon.com

Legal

Jones Walker, LLP
10001 Woodloch Forest Dr.,
Ste. 350
The Woodlands, TX 77380
281-296-4416
joneswalker.com

Welder Leshin LLP
800 N. Shoreline Blvd
Corpus Christi, TX 78401
361-561-8000
welderleshin.com

Wood Boykin & Wolter P.C.
615 N. Upper Broadway,
Ste. 1100
Corpus Christi, TX 78401
361-888-9201
wbwpc.com

Manufacturing and Production

ArcelorMittal
2800 La Quinta Terminal Road
Portland, TX 78374
361-704-9000
corporate.arcelormittal.com

Chemours
4127 Highway 361
Ingleside, TX 78362
361-773-1000
chemours.com

Gulf Coast Growth Ventures
4589 FM 2986 A.3.710
Gregory, TX 78359
844-280-1993
gulfcoastgv.com/about-us

Steel Dynamics
8534 TX-89
Sinton, TX 78387
260-312-7022
steeldynamics.com

Tex-Isle
4439 County Rd. 30
Robstown, TX 78380
713-461-1012
texisle.com

TEDA- TPCO America
5431 Highway 35
Gregory, TX 78359
361-704-8100
tpcoamerica.com

Marketing/ Public Relations

The Bend Business
309 N. Water St. Suite C
Corpus Christi, TX 78401
361-792-3606
tbm.magserv.com

FASTSIGNS
1220 Airline Rd. Ste. 170
Corpus Christi, TX 78412
361-991-7991
fastsigns.com/164

KCS Public Relations
P.O. Box 3664
Corpus Christi, TX 78463
361-884-8890
kcspublicrelations.com

Investor Directory

Oil and Gas Industry

Air Liquide

9811 Katy Fwy #100
Houston, TX 77024
361-299-2999
airliquide.com

Blue Water Texas Terminals

888-766-1000
bwtxtterminal.com/

Buckeye

One Greenway Plaza Ste. 600
Houston, TX 77046
361-288-8870
buckeye.com

Corpus Christi Brine Services

711 N Carancahua St Ste 1100
Corpus Christi, TX 78401
361-884-4448
corpuschristibrineserviceslp.
psiclientweb.com

Cheniere

622 Hwy 35
Gregory, TX 78359
361-888-8100
cheniere.com/terminals/Ing

Kiewit Offshore Services, Ltd.

2440 Kiewit Road
Ingleside, TX 78362
361-775-4350
kiewit.com

Magellan Midstream Partners, LP

One Williams Center
Tulsa, OK 74172
361-903-1100
magellanlp.com

ENBRIDGE

1450 Lexington Blvd. Bldg. 300
Ingleside, TX 78362
832-930-4838
modamidstream.com

NuStar Energy

410 SPID Ste 200
Corpus Christi, TX 78405
361-249-9429
NuStarEnergy.com

Petrochemical Refineries

CITGO Refining and Chemicals

1802 Nueces Bay Blvd.
Corpus Christi, TX 78407
1-800-992-4846
citgo.com/Home.jsp

Valero Corpus Christi Refinery

1147 Cantwell Lane
Corpus Christi, TX 78469
361-289-6000
valero.com

Real Estate

Adame Commercial Real Estate Solutions

819 N. Upper Broadway
Corpus Christi, TX 78401
361-880-5888
joeadame.com/wordpress

Hunter Temporary Housing

2334 State Highway 361
Ingleside, TX 78362
956-778-2193
hunterhousing.com

K&M Premier Real Estate

7002 S. Staples Ste. 104
Corpus Christi, TX 78413
361-739-1396
kmrealestate.com

Landlord Resources, LLC

3833 S. Staples St., Ste. 116
Corpus Christi, TX 78411
361-857-8991
landlord-resources.com

San Jacinto Title Services

520 Lawrence
Corpus Christi, TX 78401
361-985-2004
sanjacintotitle.com

Stonewater Properties

418 Peoples St, Ste. 400
Corpus Christi, TX 78401
361-877-7024
stonewaterproperties.com

WITMYER Coastal Bend Properties

1014 Forest Oak Drive
Portland, TX 78374
361-643-4400
har.com/witmyer-coast-
al-bend-propertie/broker_CCA-
RTX-090600

Retail/Wholesale

CORT, A Berkshire Hathaway Co.

3041 Holly Road
Corpus Christi, TX 78415
361-854-1121
cort.com

La Palmera

5488 S. Padre Island Dr.
Ste. 200
Corpus Christi, TX 78411
361-991-5718
lapalmera.com

Peerless Cleaners

3434 S. Staples & Rosedale
Corpus Christi, TX 78404
361-854-2625
peerlesscleaners.com

Seven Brew

3133 Caruth Blvd
Dallas, TX 75225
405-249-3232
tejasbrewistas.
7brewcareers.com

Sports and Recreation/Fitness

Corpus Christi Athletic Club

2101 Airline Rd
Corpus Christi, TX 78414
361-992-7100
corpuschristiathleticclub.com

Corpus Christi Hooks Baseball

734 E. Port Avenue
Corpus Christi, TX 78401
361-561-4665
cchooks.com

Title Services

Buchanan Title

737 Everhart Road Unit A
Corpus Christi, TX 78411
361-299-6388
buchanantitle.com

Coastal Bend Title Services

5402 Holly Rd.
Corpus Christi, TX 78411
361-993-2033
firsttitlecompany.com

Stewart Title Company

5926 S. Staples Ste. A
Corpus Christi, TX 78413
361-906-0001
stewart.com/en/stc/
corpus-christi.html

Transportation and Warehousing

McComb Relocation Services

3117 Cabaniss Parkway
Corpus Christi, TX 78415
361-888-5907
mccombrelocationservices.com

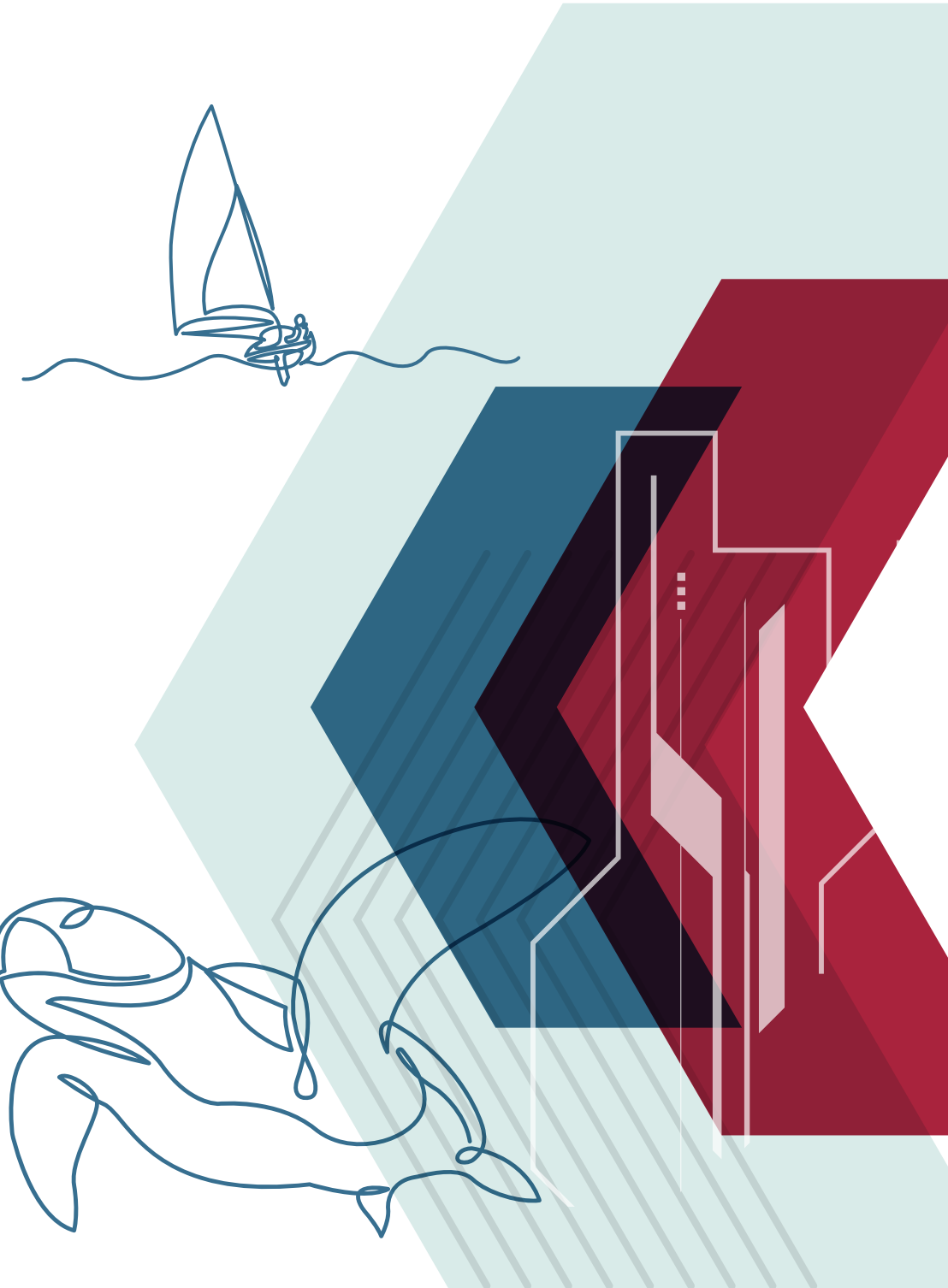
Valls Group

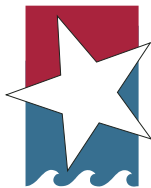
210 S. Carancahua St., Ste. 600
Corpus Christi, TX 78401
361-884-4096
vallsgroup.com

Waste Management Services

Frontier Waste Solutions

550 Flato Rd
Corpus Christi, TX 78405
361-289-5588
frontierwaste.com





Corpus Christi
REGIONAL ECONOMIC
DEVELOPMENT CORPORATION

800 N. Shoreline Blvd
Ste. 1300 South
Corpus Christi, Texas 78401

(361) 882-7448
www.ccredc.com

