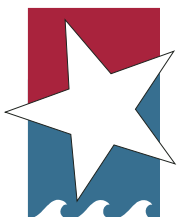
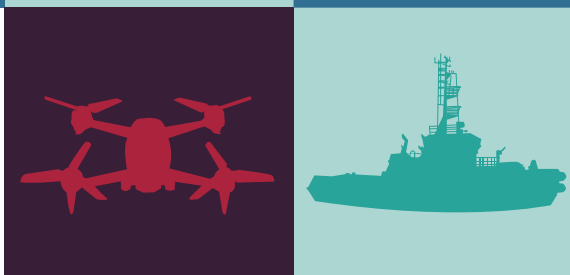


2023

ANNUAL REPORT



Corpus Christi
REGIONAL ECONOMIC
DEVELOPMENT CORPORATION



Mission Statement

The mission of the Corpus Christi Regional Economic Development Corporation is to expand and enhance the region's economic base by developing and/or supporting projects that create primary jobs to improve the diversity and size of the local economy.

Meet the Team



Whitney Winkler

Administrative Director
wwinkler@ccredc.com

Brittany Sotelo

VP of Business Retention
& Expansion
bsotelo@ccredc.com

Mike Culbertson

President & CEO
mculbertson@ccredc.com

Randy Almaguer

Compliance Officer
ralmaguer@ccredc.com

Sarah Tindall

SVP of External Affairs
saraht@ccredc.com

Robert Kelley

VP of Attraction
rkelly@ccredc.com



Letter From CEO Mike Culbertson

Corpus Christi
REGIONAL ECONOMIC
DEVELOPMENT CORPORATION



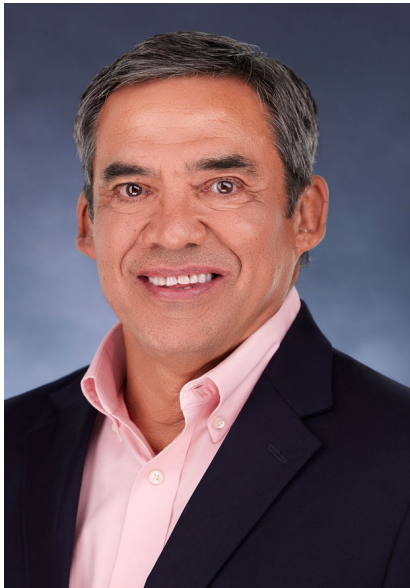
Hello and happy 2024 to our CCREDC investors and stakeholders! Last year was a busy one for the organization, and I am proud of the work our team has done to forward our mission to bring jobs and investment to the Coastal Bend.

I am also proud and humbled to have accepted the position of President and CEO of CCREDC in April of this past year after serving as Interim CEO for several months and look forward to great things to come for our group.

In 2023 we welcomed the Tesla Lithium plant to our area, with a \$375M capital investment and 150 permanent jobs at an average annual wage of \$80,000. Project Net Zero was also successfully recruited to our area last year. This project will use carbon from our local refineries to produce an e-fuel that will be used as jet fuel. The \$25 million investment will bring 25 new jobs to the Coastal Bend.

Our work with the Corpus Christi B Corporation (Type B Board) resulted in several noteworthy projects last year, with incentives approved for the Corpus Christi Football Club, the Admiral's Quarters on NAS Corpus Christi (CNATRA), and the Ritz Theatre.

With these new high paying jobs comes a tangible benefit that benefits our whole community: the Corpus Christi MSA can now boast that it has a median wage on par with the average for the State of Texas for the first time in our storied history. This is exciting news and exemplifies the importance new industry with skilled jobs has on our region. Impact like this is what gets our team at the CCREDC pumped up about the work that we do every day.



2024 is shaping up to be a busy year, with over \$12B in proposed projects we are working on location in the Coastal Bend. Most of these are in the green industry- we are making our mark internationally as a possible hub for hydrogen/ammonia and green steel production, which serves to further diversify our economy by adding these new fuels and manufacturing to our traditional oil and gas base.

In order to capitalize on these new opportunities, we must work together as a region to solve water and power availability issues, and we are encouraged by the local leadership coalescing around these issues to find solutions and give our economy the chance to take advantage of this manufacturing renaissance. Communities from Robstown to Gregory/Portland are using added tax revenues generated from these new industries to build schools and enhance the quality of life for their residents and it is wonderful to see this taking shape around us.

Most importantly, all of this wonderful growth has transformed our area while also preserving our beautiful natural environment. Our air quality is even better than it was 10 years ago before this \$57.4B of new industry became operational, and our water quality is so good we have aqua farming companies seeking locations here to grow fish using water from our bay. We thank our industrial partners for their commitment to sustainability and we commit to continuing to seek growth for our area that protects our environment.

Thank you for your support of our organization - together a bright future is on the horizon!

Mike Culbertson
President & CEO

2023 Board of Directors

The CCREDC Board of Directors is comprised of seven elected investor representatives as well as appointees from the City of Corpus Christi, San Patricio County, Nueces County, and the City of Portland as well as ex-officio members representing the United Corpus Christi Chamber of Commerce, the Corpus Christi Black Chamber of Commerce, WorkForce SOLUTIONS, the City of Robstown, the San Patricio County Economic Development Corporation, Texas A&M University - Corpus Christi, and Del Mar College.

Chairman

Judith Talavera
AEP Texas

Vice Chairman

Robert J. "Bobby" Gonzalez
Gonzalez Law

Secretary / BDAC Chair

Anna Aldridge
Hanson

Immediate Past Chair

William Goldston
WFGCON, LLC

Treasurer

Dr. Bryan Gulley
Port of Corpus Christi Authority

City of Corpus Christi Representative

Paulette Guajardo
City of Corpus Christi Mayor

City of Corpus Christi Representative

Michael Hunter
City of Corpus Christi Councilman

City of Corpus Christi Representative

Robert Rocha
City of Corpus Christi

City of Corpus Christi Representative

Dr. Vishnu Reddy
City of Corpus Christi

City of Portland Representative

Cathy Skurow
Portland City Mayor

San Patricio County Representative

Tom Yardley
San Patricio County Commissioner

Nueces County Representative

Connie Scott
Nueces County Judge

Investor Representative

Adam Phillippi
MMR

Investor Representative

Bart Braselton
Braselton Development

Investor Representative

Eric Evans
Corpus Christi Medical Center

Investor Representative

Dennis Black
Steel Dynamics

Port Corpus Christi Representative

Gabriel Guerra
Kleberg Bank

Ex-Officio Member

Peter Zaroni
Corpus Christi City Manager

Ex-Officio Member

Kent Britton
Port of Corpus Christi Authority

Ex-Officio Member

Dr. Kelly Miller
Texas A&M University - Corpus Christi

Ex-Officio Member

Lenora Keas
Del Mar College

Ex-Officio Member

Ken Trevino
Workforce Solutions

Ex-Officio Member

Teresa Flores
San Patricio County EDC

Ex-Officio Member

Brett Oetting
Visit Corpus Christi

Ex-Officio Member

Al Arreola
United Corpus Christi Chamber

Ex-Officio Member

Curtis Clark
Corpus Christi Black Chamber

Ex-Officio Member

Dr. Roland Hernandez
CCISD

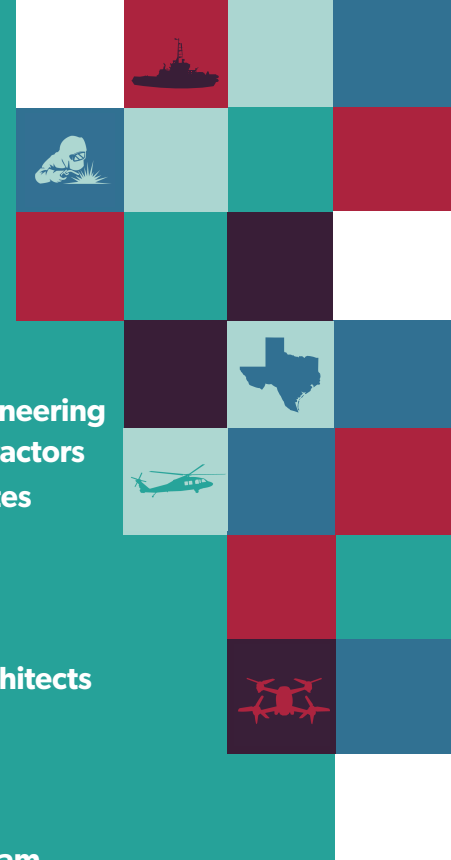


Business Development Advisory Committee

AEP Texas
AGCM
Air Liquide
American Bank
ARDURRA
Bay Ltd.
Braselton Development
Buckeye Partners
Calpine Energy
Corpus Christi Gasket & Fastener
Corpus Christi Hooks
Cheniere
CHRISTUS Spohn

CITGO
Corpus Christi Medical Center
Driscoll Children's Hospital
Frost Bank
Gulf Coast Growth Ventures
Hanson Engineering
HDR Inc.
H-E-B
Jones Walker, Avident Advisors
Kleberg Bank
Landlord Resources
MMR Group

Pape-Dawson Engineering
Performance Contractors
Radiology Associates
Rock Engineering
Steel Dynamics
Turner Industries
Turner Ramirez Architects
TXU Energy
Unique HR
Valero
Victory Building Team
Worley



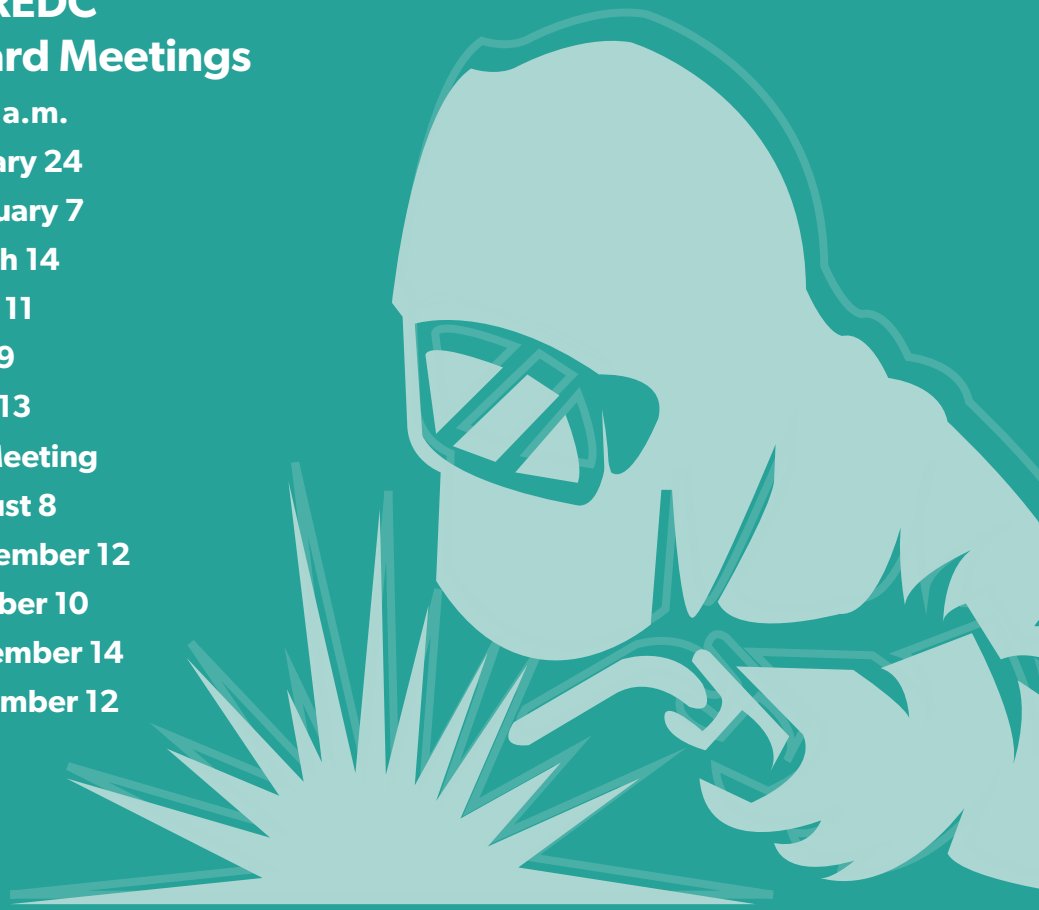
Important Dates

Senior Executive Breakfast Dates

8:00 a.m.
January 9
February 6
March 12
April 9
May 7
June 11
July 9
August 6
September 10
October 8
November 12
December 10

CCREDC Board Meetings

8:00 a.m.
January 24
February 7
March 14
April 11
May 9
June 13
No Meeting
August 8
September 12
October 10
November 14
December 12



Quality of Place Initiatives

Recommendations Summary

- Talent Retention Programs
- 2,000 Additional Downtown Residential Units
- Public Park + Beachfront Activation
- Increased Mixed Use Neighborhoods
- Walkable Neighborhood Design/Zoning Standards + Incentives
- Blighted Properties Program
- Litter Campaigns
- Pothole Repair Warranties
- Public Art Programs
- Festivals + Events
- Social Offerings/Community Concierge for Trailing Spouses/Job Programs
- TAMU-CC Presence Downtown Anchor
- Del Mar College Tuition Programs for local High School Graduates

Stakeholders:

Art Center of Corpus Christi
Art Museum of South Texas
City of Corpus Christi
City of Portland
City of Rockport/ Fulton
Coastal Bend Innovation Center
Corpus Christi Downtown Management District
Del Mar College
Portland Chamber of Commerce
Rockport Chamber of Commerce
Texas A&M University- Corpus Christi
United Corpus Christi Chamber of Commerce
Visit Corpus Christi
Young Business Professionals of the Coastal Bend

2021 Targeted Industry Study Update

Newmark Sectors to Pursue

Small and Mid-Sized Manufacturing (Including Advanced)
Plastic Products Manufacturing
Fabricated Metals Manufacturing
UAS (drones) and Aerospace

Portfolio of Current Projects Snapshot

Energy/Chemical (including Green Fuels) 35%

UAS/Drone 25%

Steel and Metal Fabrication 15%

Advanced Manufacturing 15%

Recycling/Green Manufacturing 10%



Teamwork Makes the Dream Work

It takes a team to drive economic development projects from the start to finish line. From elected officials, landowners to realtors, utility, and workforce, the CCREDC has the best partners! We would like to thank all of our partners who assisted our staff throughout the year and recognize those that go over and beyond to ensure our economy thrives.



LORI GARZA

ROBSTOWN ISD BOARD OF TRUSTEES

Lori played an instrumental role in the recruitment of Telsa as the Robstown ISD Board President and continues to seek new opportunities for RISD students.

BRADLEY LENZ

AEP TEXAS

Got Electricity? Is a common question that Bradley receives from CCREDC staff during tight deadlines for prospective companies seeking to move the region. Without fail, Bradley is there!



MELODY PRO-SMITH & TEAM

CCISD CTE COORDINATOR

Melody, Veronica and Team went over and beyond this year to coordinate the attendance of CCISD CTE students at career fairs to learn about professions in the Coastal Bend.



JEFF MCKAMEY

MCKAMEY FARMS

Jeff's forward-thinking mindset moved him to sell land owned by his family since the late 1800's to GCGV which has led to major growth and community investment in Portland, TX.

DAN KORUS

DEL MAR COLLEGE

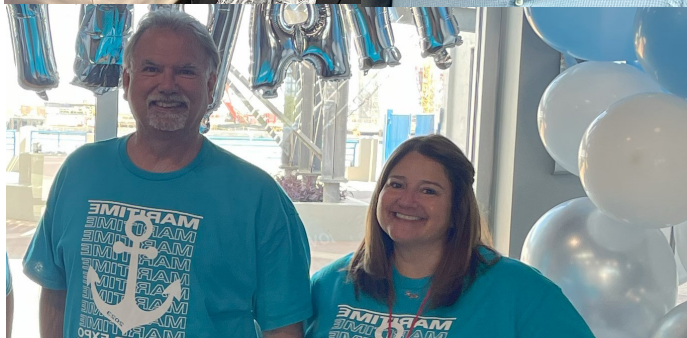
Whenever CCREDC needs a helping hand, Dan is ready to lend a hand for workforce events, recruitment visits and manufacturing opportunities.



ROBERT MIRABEL & TEAM

APEX ACCELERATORS

Robert, Veronica and his team are long-term partners of the CCREDC and have volunteered on multiple occasions to assist CCREDC staff during events.



KIRK BOURLAND

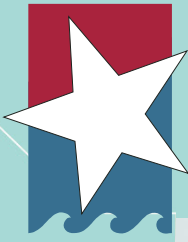
PNC BANK

Kirk and Manufacturing go hand-in-hand. For the past two years, he has served as a driving force behind the success and growth of the MFG. Day Expo event.

LENNY ANZALDUA & VERONICA UGUES

WORKFORCE SOLUTIONS

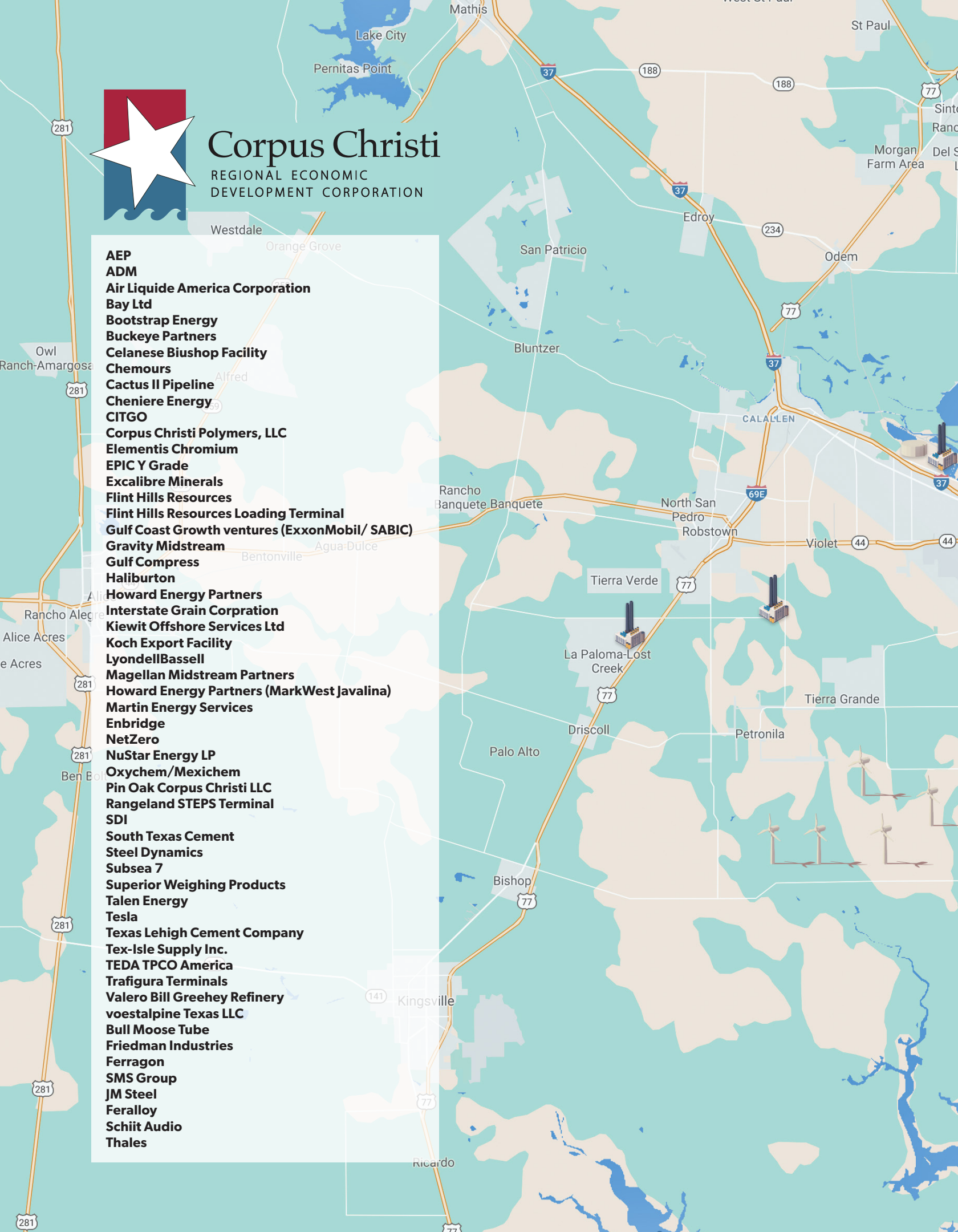
Lenny and Veronica played a major role in coordinating the maritime career fair along with their colleagues at Workforce Solutions. We appreciate their willingness to always say YES to assisting companies.



Corpus Christi

REGIONAL ECONOMIC
DEVELOPMENT CORPORATION

AEP
ADM
Air Liquide America Corporation
Bay Ltd
Bootstrap Energy
Buckeye Partners
Celanese Biushop Facility
Chemours
Cactus II Pipeline
Cheniere Energy
CITGO
Corpus Christi Polymers, LLC
Elementis Chromium
EPIC Y Grade
Excalibre Minerals
Flint Hills Resources
Flint Hills Resources Loading Terminal
Gulf Coast Growth ventures (ExxonMobil/ SABIC)
Gravity Midstream
Gulf Compress
Haliburton
Howard Energy Partners
Interstate Grain Corporation
Kiewit Offshore Services Ltd
Koch Export Facility
LyondellBassell
Magellan Midstream Partners
Howard Energy Partners (MarkWest Javalina)
Martin Energy Services
Enbridge
NetZero
NuStar Energy LP
Oxychem/Mexichem
Pin Oak Corpus Christi LLC
Rangeland STEPS Terminal
SDI
South Texas Cement
Steel Dynamics
Subsea 7
Superior Weighing Products
Talen Energy
Tesla
Texas Lehigh Cement Company
Tex-Isle Supply Inc.
TEDA TPCO America
Trafigura Terminals
Valero Bill Greehey Refinery
voestalpine Texas LLC
Bull Moose Tube
Friedman Industries
Ferragon
SMS Group
JM Steel
Feralloy
Schiit Audio
Thales





**\$57.4 Billion
in Regional
Investment**

Recent Area Projects Won

CAPITAL INVESTMENT	
Academy	6,000,000
Adler Scaffolding	2,000,000
ArcelorMittal (voestalpine)	770,000,000
Baker Hughes	4,500,000
BASF	55,000,000
Bay Vista II	17,960,000
Bootstrap	2,250,000
Bootstrap Energy	1,000,000,000
Bull Moose Tube	2,750,000
C.C. Cold Storage	2,400,000
CamRet	5,000,000
Capital	24,000,000
Celanese	150,000,000
Chemours	245,000,000
Cheniere	4,500,000,000
Cheniere	14,500,000,000
Christian Brothers	1,200,000
Coast Guard	45,000,000
Commercial Metals Company	25,000,000
Cosmopolitan	20,000,000
Development 2000	5,000,000
Eagle Materials	22,000,000
Envirotech Carriers	500,000
EPIC Y Grade	200,000,000
Ferragon	1,500,000
Flint Hills	350,000,000
Friedman Industries	3,000,000
GE Dresser	1,000,000
Govind Development	2,100,000
Gravity Mid-Stream	200,000,000
Groomers	5,000,000
Gulf Coast Growth Ventures	9,458,000,000
Hausman Foods	2,100,000
HEB Bakery	17,700,000

CAPAL INVESTMENT	
LyondellBassell	500,000,000
M&G Group	750,000,000
Magellan Midstream Partners	350,000,000
MarkWest Javalina	80,000,000
National Oilwell VARCO	21,000,000
Net Zero	25,000,000
Occidental Chemical	1,300,000,000
Occidental Petroleum	58,500,000
Ortiz Construction	750,000
Oxy Petroleum	100,000,000
Plains American	100,000,000
PV Rentals	1,000,000
QSROnline	400,000
Radiology Associates	6,000,000
Rangeland Energy	100,000,000
Results	100,000
Schiit Audio	1,000,000
SMS Group	4,800,000
Steel Dynamics	1,800,000,000
Strike Pumps	500,000
STX Beef Processors	1,000,000
Superior Weighing	18,000,000
SWC Group	500,000
TAMU-CC (FAA Center)	1,000,000
TEDA - TPCO	1,000,000,000
TESLA	400,000,000
Tex-Isle	50,000,000
TexStar	97,000,000
Thomas Petroleum	50,000,000
ThyssenKrupp	3,250,000
Topaz Power	860,000,000
Trafigura, Martin Mid-Stream	800,000,000
Triumph	1,000,000
US Border Patrol	1,400,000
Valero	250,000,000

2023 INDUSTRIAL PROJECTS

TESLA

JOB COUNT

162

CAPITAL INVESTMENT \$380 MILLION

NETZERO

JOB COUNT

25

CAPITAL INVESTMENT \$25MILLION

CCREDC Type B Support

The Corpus Christi B Corporation collects 1/8th percent sales tax. This was passed in 2018 to replace the Type A economic sales tax that helped pay for Whataburger Field and many Type A business incentives and affordable housing. 50% of Type B funds will be used for economic development projects, \$500,000 annually for affordable housing, and the rest to streets that are designated arterials and collectors.

The EDC has provided staffing for the Type A and now Type B Board since its inception. A project fills out an application for incentives. If they were eligible, the application would be presented to the CCREDC Board of Directors. Our Board would forward a recommendation of approval or disapproval to the Type B Board. If the Type B Board approved the grant and the agreement, the agreement would go to the City Council for allocation of the grant money. There have been twenty-nine grants that have been completed and there are currently

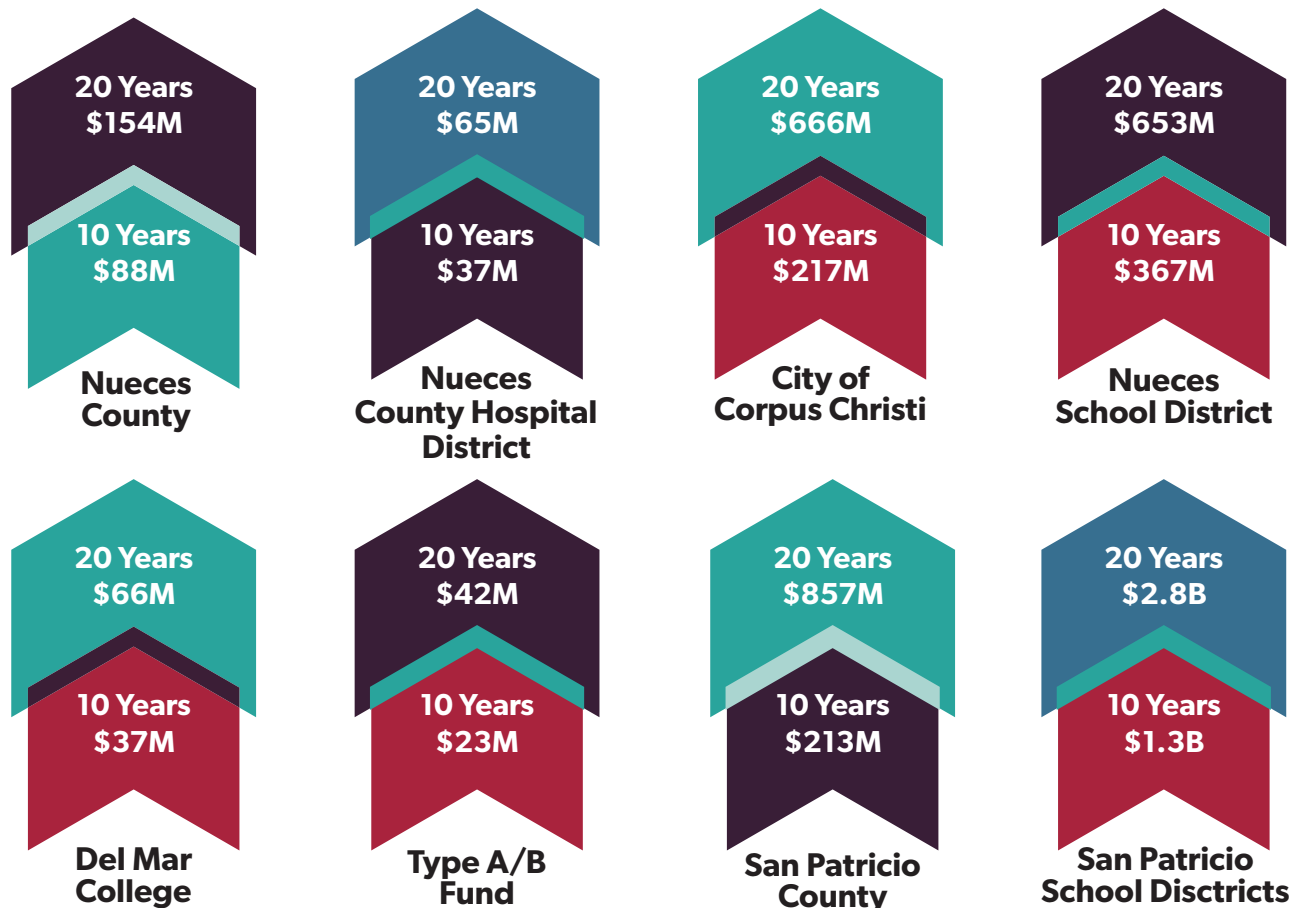
nine large active projects. These projects have received \$28 million in grants and invested over \$108 million and created 1,078 jobs. The Type B also provide funding for eight Small Business Assistance Programs. These small business assistance programs include: internships programs that match students at both Del Mar College and Texas A&M University - Corpus Christi with small businesses to work as interns; Service Corps of Retired Executives for mentoring small businesses, LiftFund, a micro-lender for those companies having trouble getting business loans from banks, Del Mar College government procurement known as PTAC, large business procurement center called CRC, the Small Business Development Center business counsellors, and the Cyber Center.

Each of these agreements require that the EDC completes the compliance on them before any money is paid.

Community Impact

\$57.4 Billion in Cap Ex: What it means for our local taxing entities?

These taxes are net of any incentive offered. Assumed the time to complete schedule doesn't move appreciatively. City of Corpus Christi includes the industrial district PILOT payments.



2023 Business Retention and Expansion Report

Business Retention & Expansion (BR&E) is an economic development strategy of proactively connecting with existing businesses to understand and respond to their needs.

80% of the region's growth comes from expansion of existing businesses.

Staff conducts interviews every month with businesses to collect data and provide the best resources for their overall success.



In response to the 2022 business challenges, CCREDC staff planned the following with regional partners

- Manufacturing Day Expo & Career Fair
- Manufacturing Mixer
- Maritime Career Fair
- Workforce Scoop Networking Event
- Highway 77 Corridor Planning Meeting



Manufacturing Day Expo Statistics

- 185 student attendees
- 200 Luncheon attendees
- 30 vendors
- Fireside Chat with Kiewit and Dixie Ironworks
- "State of Manufacturing" Luncheon

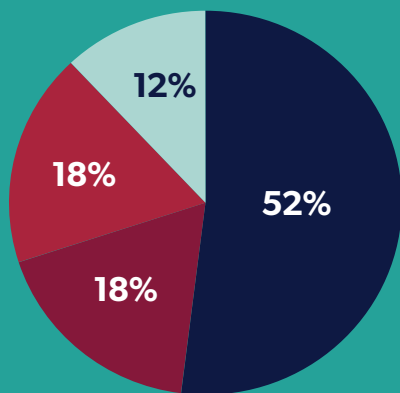


Maritime Career Fair Statistics

- 280 student attendees
- 12 Regional Schools
- 36 Employers
- 70 Job Seekers



2023 BRE VISITS: 60



- MANUFACTURING
- BUSINESS, PROFESSIONAL AND TECHNICAL SERVICES
- CONSTRUCTION & CONTRACTORS SPECIAL TRADE
- OTHER

TOP BUSINESS CHALLENGES

1. WORKFORCE
2. INFRASTRUCTURE
3. QUALITY OF LIFE

39%

OF BUSINESSES INDICATED PLANS TO EXPAND IN WITHIN THE NEXT YEAR

73%

OF COMPANIES INDICATED THEIR KEY PRODUCT(S) MARKET SHARE WAS STABLE OR INCREASING

TOP JOBS IN DEMAND

MILL MANAGERS PIPE-FITTERS RIGGERS
 CONSTRUCTION SUPERVISORS BOIL MAKERS
 PAINTERS OPERATORS
TECHNICIANS
 SCAFFOLD BUILDERS ENGINEERS
 METALLURGISTS
 WAIT STAFF MACHINISTS GENERAL LABORERS
 WELDERS ANALYSTS
 MECHANICS MILLWRIGHTS

EFFECTIVE RECRUITMENT AND RETENTION STRATEGIES:

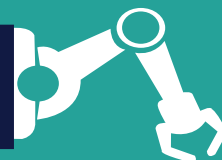


- COLLABORATING WITH REGIONAL HIGH SCHOOLS TO PROVIDE "BUILDING CAREERS" PRESENTATIONS
- "SIGN DAYS" FOR HIGH SCHOOL STUDENTS
- MAINTAINING A POSITIVE "COMPANY CULTURE" TO RETAIN EMPLOYEES
- UTILIZING JOB FAIRS PROVIDED BY WORKFORCE SOLUTIONS

TOP REQUESTED ASSISTANCE

1. INCENTIVES
2. EDUCATION PARTNER CONNECTION
3. MANUFACTURING
4. EMPLOYEE TRAINING
5. INFRASTRUCTURE

TECHNOLOGY



17%

OF COMPANIES INDICATED THEY ARE INVESTING IN NEW TECHNOLOGY IN THE NEXT YEAR INCLUDING:

- BATTERY STORAGE TECHNOLOGY
- VEGETABLE OIL AS FEEDSTOCK
- CARBON REDUCTION TECHNOLOGY
- VIRTUAL WELDING TRAINING
- AUTOMATION FOR MACHINERY PROCESSES

CCREDC 2023 Calendar of Events

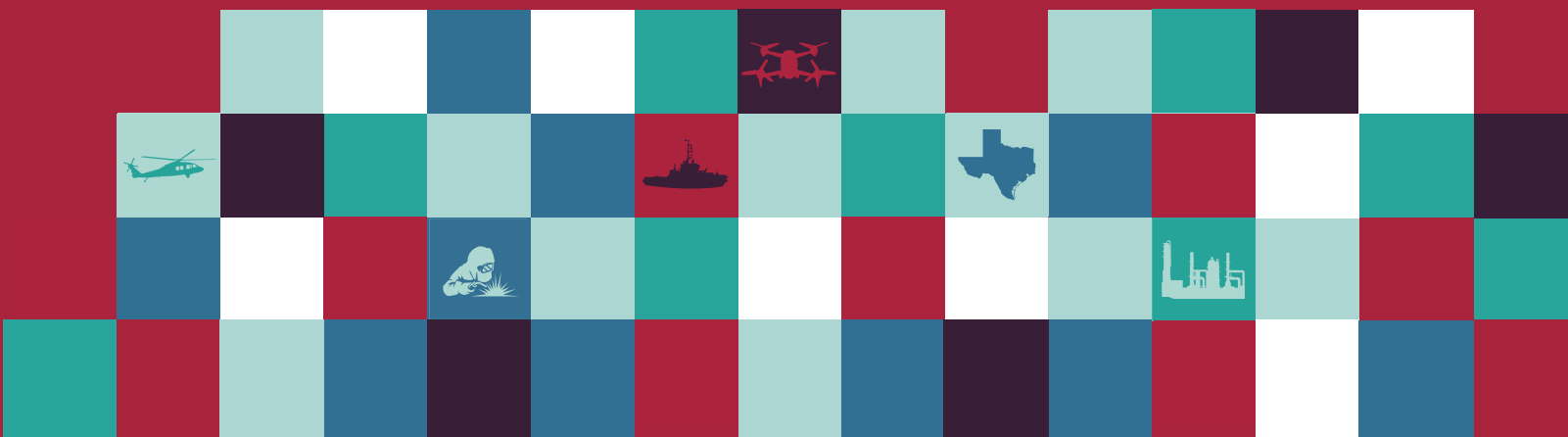
In response to the top business challenges, CCREDC staff collaborated with regional partners to plan programming and attend events including:

Trade Shows

- AISTECH
- CLEANPOWER
- HELI EXPO
- HYDROGEN TECH EXPO NORTH AMERICA
- MOVE AMERICA
- PETROCHEM
- TEDC / IEDC
- UAV COMMERCIAL EXPO
- WORLD HYDROGEN

Events

- ANNUAL MEETING 2023
- COASTAL BEND MARITIME EXPO & CAREER FAIR
- COASTAL BEND MANUFACTURING DAY EXPO
- ECONOMIC TRENDS UPDATE PANEL
- HIGHWAY 77 CORRIDOR PLANNING MEETING
- WORKFORCE SCOOP NETWORKING EVENT





Investor Spotlight

We would like to take a moment to thank every investor for the success of this year. Featured here in this section are the incredible companies that have offered their continued support to expand, grow, and aid the Coastal Bend Region. If you would like to become one of our featured sponsors, please contact Sarah Jacobi Tindall at saraht@ccredc.com or call 361-882-7448

EXECUTIVE INVESTORS



INDUSTRY LEADER INVESTORS



COMMUNITY STAKEHOLDER



PRINCIPAL INVESTORS



Investor Directory

Accounting/Auditing

Buckley and Associates, P.C.

101 N Shoreline Blvd. Ste. 500
Corpus Christi, TX 78401
361-883-1871
ba-cpa.com

Perrone, Trigger & Associates, PC

500 N. Shoreline Blvd, Ste. 502
Corpus Christi, TX 78401
361-888-5151
perronettrigger.com

Architectural Services

Turner|Ramirez Architects

5525 S. Staples, Suite A-7
Corpus Christi, TX 78411
361-994-8900
trarch.com

Richter Architects

201 S Upper Broadway,
Corpus Christi, TX 78401
361-882-1288
richterarchitects.com

Arts, Entertainment, and Media

Texas State Aquarium

2710 North Shoreline
Corpus Christi, TX 78402
361-881-1254
texasstateaquarium.org

Automotive/Motor Vehicle/Parts

Ed Hicks Family of Dealerships

3000 South Padre Island Drive
Corpus Christi, TX 78415
361-654-1955

Banking

1st Community Bank

416 Water St.
Corpus Christi, TX 78401
361-882-9310
fcbot.com

American Bank

800 N. Shoreline Blvd.
Ste. 200 S
Corpus Christi, TX 78401
(800) 257-8316
americanbank.com

Charter Bank

801 Navigation
Corpus Christi, TX 78408
361-241-7681
charterbankcc.com

Frost Bank

501 S. Shoreline Blvd.
Corpus Christi, TX 78401
361-844-1010
frostbank.com

International Bank of Commerce

221 S. Shoreline Blvd.
Corpus Christi, TX 78401
361-888-4000
ibc.com

Kleberg Bank

5350 S. Staples St.
Corpus Christi, TX 78411
361-850-6819
klebergbank.com

Plains Capital Bank

500 N. Shoreline Blvd., Ste. 200
Corpus Christi, TX 78401
361-939-5602
plainscapital.com

PNC

101 N Shoreline Blvd. Ste. 100
Corpus Christi, TX 78401
361-903-1281
pnc.com

Prosperity Bank

921 N. Water St.
Corpus Christi, TX 78401
361-387-5280
prosperitybankusa.com

Rally Credit Union

P.O. Box 81349
Corpus Christi, TX 78468
361-986-4500
rallycu.com

Randolph-Brooks Federal Credit Union

5253 S. Staples St.
Corpus Christi, TX 78411
361-215-1296
rbfcu.org

ValueBank Texas

3649 Leopard Street
Corpus Christi, TX 78408
361-851-9390
valuebanktexas.com

Computer Services

Celeix Digital

5709 Narsonne St.
Corpus Christi, TX 78414
celeix.digital

Construction

Associated Builders & Contractors Texas Coastal Bend

7433 Leopard St.
Corpus Christi, TX 78409
361-289-5311
abctcb.org

Bay Ltd/A Berry Company

1414 Corn Products Rd.
Corpus Christi, TX 78409
361-561-4665
bayltd.com

Beecroft Construction

2222 Laredo Street
Corpus Christi, TX 78405
361-882-6791
beecroftconstruction.com

Braselton Development

5337 Yorktown Blvd
Corpus Christi, TX 78413
361-991-4710
braseltonhomes.com

Cajun Industries Holdings

15635 Airline Hwy,
Baton Rouge, LA 70817
225-753-5857
cajunusa.com

Caliber Solutions

4850 Lafin Dr.
Beaumont, TX 77705
409-554-0800
calibersolutions.com

Coonrod Electric Co.

213 N. Rachal
Sinton, TX 78387
361-945-7236
coonrodelectric.com



Corpus Christi Gasket & Fastener

341 Westchester Dr, Corpus Christi, TX 78408
361-884-6366
ccgasket.com

Hogan Homes

1301 Antelope St.
Corpus Christi, TX 78401
361-214-5719
hoganhomestexas.com

Industrial Specialists LLC

222 Gilliam St.
Corpus Christi, TX 78409
361-360-3214
indspec.com

International Brotherhood of Electrical Workers Local Union 278

2301 Saratoga Blvd
Corpus Christi, TX 78417
361-855-1084
ibew278.org

JOLE Enterprise

2738 Dallas Ave
Ingleside, TX 78362
361-238-3596
joleenterprise.com

McCarthy Building Co.

8627 N. MoPac Expressway,
Suite 240
Austin, TX 78759
512-982-7565
mccarthy.com

MMR Group

2033 FM 2725
Ingleside, TX 78362
361-758-4019
mmrgrp.com

MPM Homes

6722 Brockhampton St.
Corpus Christi, TX 78414
361-774-3832
mpmhomes.net

Performance Contractors, Inc.

1599 N. Lexington
Corpus Christi, TX 78409
361-692-6618
performance-contractors.com

Puffer-Sweiven

621 Navigation
Corpus Christi, TX 78408
361-883-6215
puffer.com

Reytec

718 S Navigation Blvd.
Corpus Christi, TX 78405
361-502-1932
reytec.net

Richard Design Services

210 S Carancahua St #500
Corpus Christi, TX 78401
richardepc.com

Southern States Millwright Regional Council

2000 Southbridge Pkwy,
Ste 203
Birmingham, AL 35209
855-577-7672

State Service

919 Bishop Road
Ingleside, TX 78362
361-776-7399
stateservice.com

Turner Industries

8601 Interstate Hwy. 37
Corpus Christi, TX 78409
361-248-3183
turner-industries.com

Victory Building Team

402 S Chaparral St, Suite A
Corpus Christi, TX 78401
361-991-5600
victorybuildingteam.com

Consulting Services

AG|CM, Inc.

1101 Ocean Dr.
Corpus Christi, TX 78404
361-882-0469
agcm.com

Engel & Associates LLC

800 N. Shoreline Blvd.,
Ste. 2200 N.
Corpus Christi, TX 78401
361-883-5535

Education

Del Mar College

101 Baldwin Blvd.
Corpus Christi, TX 78404
361-698-1200
delmar.edu

Texas A&M University-Corpus Christi

6300 Ocean Dr. Unit 5741
Corpus Christi, TX 78412
361-825-5700
tamucc.edu/

Employment Placement Agencies

L.K. Jordan & Associates

400 Mann St, Suite 410
Corpus Christi, TX 78401
361-814-9700
lkjordan.com

Coastal Bend Employment

14493 S. Padre Island Dr,
Corpus Christi, TX 78418
coastalbendemployment.wix.com/

Sterling Personnel, Inc.

3833 S. Staples Street,
Ste. N103
Corpus Christi, TX 78411
361-854-5151
sterlingpersonnelinc.com

Unique HR

4646 Corona, Ste. 100
Corpus Christi, TX 78411
361-852-6392
uniqueemployment.com

Workforce Solutions of the Coastal Bend

520 N. Staples Street
Corpus Christi, TX 78401
361-225-1098
workforcesolutionscb.org

Energy/Utilities

AEP Texas

P.O. Box 2121
Corpus Christi, TX 78403
887-373-4858
aeptexas.com

Calpine Energy Solutions, LLC

717 Texas Ave. #1000
Houston, TX 77002
832-530-1113
calpinesolutions.com

L5E, LLC

4545 Fuller Dr, Ste 412
Irving, TX 75038
972-445-9584
energyby5.com

Powering Coastal Texas

2825 Wilcrest Dr. Ste. 303
Houston, TX 77042
713-977-2522
poweringcoastaltexas.com

Schneider Electric

555 N Carancahua St #230,
Corpus Christi, TX 78401
361-290-6900
schneider-electric.com

TXU Energy

2603 Augusta Dr. Ste. 300
Houston, TX 77057
713-953-6083
txu.com

Investor Directory

Engineering

ARDURRA

801 Navigation, Suite 300
Corpus Christi, TX
361-883-1984
ardurra.com

Civil & Enviromental Consultants

400 Mann St, Suite 505
Corpus Christi, TX 78401
346-378-7800
cecinc.com

Freese & Nichols

800 N. Shoreline Blvd, Ste 1600
N
Corpus Christi, TX 78401
361-561-6500
freese.com

Half Associates

711 N. Carancahua St. Ste. 1190
Corpus Christi, TX 78401
361-400-0981
half.com

Hanson Professional Services, Inc.

4501 Gollihar Rd.
Corpus Christi, TX 78411
361-814-9900
hanson-inc.com

HDR

555 N. Carancahua Street
Ste. 1600
Corpus Christi, TX 78401
361-779-1971
hdrinc.com

Kingham Dalton Wilson, Ltd.

5858 Westheimer Suite 1500
Houston, TX 77057
713-920-9543
kdwltd.com

Lanier & Associates Consulting Engineers

500 N. Shoreline Blvd. Ste.350
Corpus Christi, TX 78401
361-402-6996
lanier-engineers.com

LJA Engineering

5350 South Staples #425
Corpus Christi, TX 78411
361-991-8550
lja.com

Pape-Dawson Engineers

807 N. Broadway, Suite 103
Corpus Christi, TX 78401
361-360-2209
pape-dawson.com

NRG Engineering

5656 S. Staples
Corpus Christi, TX 78411
361-852-2727
nrgcc.com

Raba Kistner, Inc.

1959 Saratoga Blvd. Bldg. 11
Corpus Christi, TX 78417
281-520-9883
rkci.com

Richard Industrial Group

210 S. Carancahua Street
Corpus Christi, TX 78401
361-249-0059
richardig.com

Rock Engineering

6817 Leopard St.
Corpus Christi, TX 78409
361-883-4555
rocktesting.com

Terracon

3606 WOW Rd.
Corpus Christi, TX 78413
361-420-6023
terracon.com

Tolunay-Wong Engineers

826 S. Padre Island Dr.
Corpus Christi, TX 78416
713-458-0151
tweinc.com

WFGCON

13721 Tajamar
Corpus Christi, TX 78418
713-828-5701

Worley

1992 Lewis Turner Blvd.
Ft. Walton, FL 32547
850-585-9107
worley.com

Environmental Services

Clean-Co Systems

16308 Avenue C,
Channelview, TX 77530
866-922-2626
cleancosystems.com

Whitenton Group

3413 Hunter Rd.
San Marcos, TX 78666
512-353-3344
whitentongroup.com

Farming Industry

Gulf Compress

201 N. 19th St.
Corpus Christi, TX 78408
832-625-9375
gulfcompress.com

Jeff McKamey

361-643-2685

Financial Services

Coastal Bend Wealth Partners

800 N. Shoreline Blvd.,
Ste. 1350
Corpus Christi, TX 78401
361-886-7500
raymondjames.com/coastal-
bendwealthpartners/about-us

Susser Holdings II

800 N. Shoreline Blvd.,
Ste. 2200 N.
Corpus Christi, TX 78401
361-884-2463

Food & Beverage Processing/ Distribution

H-E-B

4444 Kostoryz Rd., Ste. 101
Corpus Christi, TX 78415
361-241-2777
heb.com

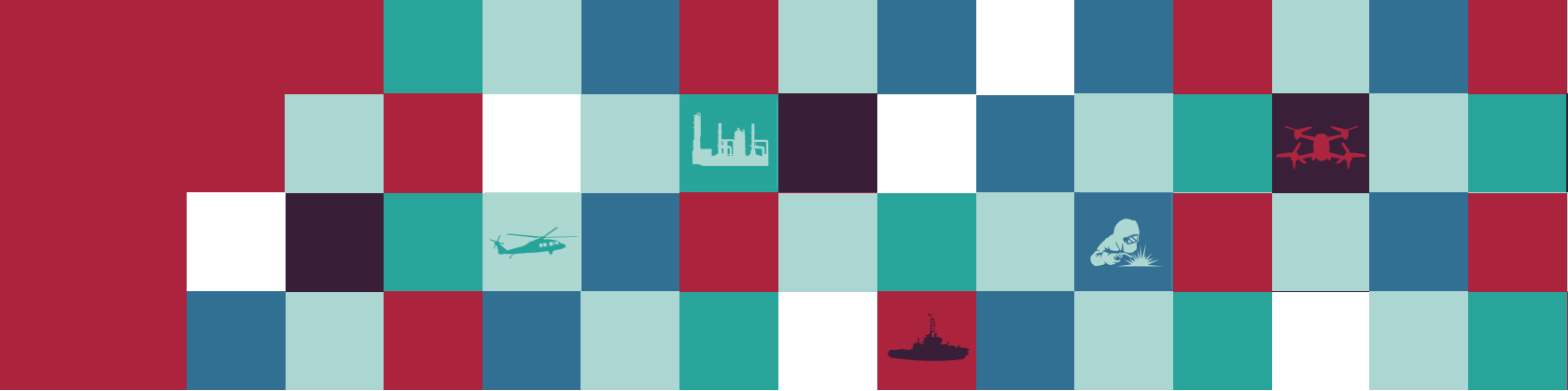
Oneta Corp.

1401 S.P.I.D.
Corpus Christi, TX 78416
361-654-3166
onetacc.com

Government

City of Corpus Christi

1201 Leopard Street
Corpus Christi, TX 78401
361-826-3100
cctexas.com

**City of Portland**

1900 Billy G. Webb Dr., Ste. 220
Portland, TX 78374
361-777-4500
portlandtx.com

**Corpus Christi Regional
Transportation Authority**

602 N. Staples St.
Corpus Christi, TX 78401
361-289-2712
ccrta.org

Nueces County

901 Leopard Street, Room 303
Corpus Christi, TX 78401
361-888-0264
co.nueces.tx.us

Port of Corpus Christi

400 Harbor Dr.
Corpus Christi, TX 78403
361-885-6189
portofcorpuschristi.com

San Patricio County

400 W. Sinton St., Rm. 109
Sinton, TX 78387
361-364-9300
co.san-patricio.tx.us

Healthcare**CHRISTUS SPOHN**

Health System
613 Elizabeth St
Corpus Christi, TX 78401
361-881-3000
christusspohn.org

Corpus Christi Medical Center

3315 S. Alameda Street
Corpus Christi, TX 78411
361-761-1501
ccmedicalcenter.com

Radiology Associates

1812 S. Alameda St.
Corpus Christi, TX 78404
361-561-3122
xraydocs.com

Hospitality/Tourism**Omni Corpus Christi Hotel**

900 North Shoreline Blvd.
Corpus Christi, TX 78401
866-238-4218
omnihotels.com/
corpus-christi

ZJZ Hospitality

1410 Crescent Dr.
Corpus Christi, TX 78412
361-855-1549
zjzhospitality.com

**Information
Technology****HighTouch Technologies**

711 North Carancahua St.,
Ste. 1500
Corpus Christi, TX 78401
361-993-1790
hightouchinc.com

Insurance**Carlisle Insurance Agency**

500 N. Water St. Suite 900
Corpus Christi, TX 78401
361-884-2775
carlisleins.com

**Higginbotham/Swantner &
Gordon Insurance Agency**

500 N. Shoreline Blvd. Ste. 1200
Corpus Christi, TX 78403
361-883-1711
higginbotham.net/
corpus-christi

State Farm Agent Bobby Hyatt

3636 S. Alameda St. Ste. K
Corpus Christi, TX 78411
361-993-9350
bobbyhyatt.com

Investments**Herdnon Plant Oakley Ltd.**

800 N. Shoreline Blvd Ste 2200
Corpus Christi, TX 78401
361-888-7611
hpo.com

REP Holdings, LLC.

P. O. Box 9609
Corpus Christi, TX 78469
361-774-1108
repcon.com

Legal**Jones Walker, LLP**

10001 Woodloch Forest Dr.,
Ste. 350
The Woodlands, TX 77380
281-296-4416
joneswalker.com

Welder Leshin LLP

800 N. Shoreline Blvd
Corpus Christi, TX 78401
361-561-8000
welderleshin.com

Wood Boykin & Wolter P.C.

615 N. Upper Broadway,
Ste. 1100
Corpus Christi, TX 78401
361-888-9201
wbwpc.com

**Manufacturing
and Production****ArcelorMittal**

2800 La Quinta Terminal Road
Portland, TX 78374
361-704-9000
corporate.arcelormittal.com

Chemours

4127 Highway 361
Ingleside, TX 78362
361-773-1000
chemours.com

Gulf Coast Growth Ventures

4589 FM 2986 A.3.710
Gregory, TX 78359
844-280-1993
gulfcoastgv.com/about-us

Steel Dynamics

8534 TX-89
Sinton, TX 78387
260-312-7022
steeldynamics.com

Tex-Isle

4439 County Rd. 30
Robstown, TX 78380
713-461-1012
texisle.com

TEDA- TPCO America

5431 Highway 35
Gregory, TX 78359
361-704-8100
tpcoamerica.com

**Marketing/
Public Relations****FASTSIGNS**

1220 Airline Rd. Ste. 170
Corpus Christi, TX 78412
361-991-7991
fastsigns.com/164

Investor Directory

KCS Public Relations

P.O. Box 3664
Corpus Christi, TX 78463
361-884-8890
kcspublicrelations.com

Oil and Gas Industry

Air Liquide

9811 Katy Fwy #100
Houston, TX 77024
361-299-2999
airliquide.com

Blue Water Texas Terminals

888-766-1000
bwtxtterminal.com/

Buckeye

One Greenway Plaza Ste. 600
Houston, TX 77046
361-288-8870
buckeye.com

Cheniere

622 Hwy 35
Gregory, TX 78359
361-888-8100
cheniere.com/terminals/lng

ConocoPhillips

3778 CR 344
Kenedy, TX 78119
346-205-2821
conocophillips.com

Corpus Christi Brine Services

711 N. Carancahua St, Ste 1100
Corpus Christi, TX 78401
361-884-4448
corpuschristibrineserviceslp.
psiclientweb.com/

Kiewit Offshore Services, Ltd.

2440 Kiewit Road
Ingleside, TX 78362
361-775-4350
kiewit.com

Magellan Midstream Partners, LP

One Williams Center
Tulsa, OK 74172
361-903-1100
magellanlp.com

ENBRIDGE

1450 Lexington Blvd. Bldg. 300
Ingleside, TX 78362
832-930-4838
modamidstream.com

EPIC Y Grade Logistics LP

500 N. Shoreline Blvd. Ste. 811
Corpus Christi TX, 78401
830-965-6966
epicpipelinelp.com

NuStar Energy

410 SPID Ste 200
Corpus Christi, TX 78405
361-249-9429
NuStarEnergy.com

Petrochemical Refineries

CITGO Refining and Chemicals

1802 Nueces Bay Blvd.
Corpus Christi, TX 78407
1-800-992-4846
citgo.com/Home.jsp

LyondellBasell

1501 Mackenzie Rd
Corpus Christi, TX 78410
361-242-8000
lyondellbasell.com

Valero Corpus Christi Refinery

1147 Cantwell Lane
Corpus Christi, TX 78469
361-289-6000
valero.com

Real Estate

Adame Commercial Real Estate Solutions

819 N. Upper Broadway
Corpus Christi, TX 78401
361-880-5888
joeadame.com/wordpress

First Title Company

5402 Holly Rd, Suite 2202
Corpus Christi, TX 78411

Hunter Temporary Housing

2334 State Highway 361
Ingleside, TX 78362
956-778-2193
hunterhousing.com

K&M Premier Real Estate

7002 S. Staples Ste. 104
Corpus Christi, TX 78413
361-739-1396
kmrealestate.com

Landlord Resources, LLC

3833 S. Staples St., Ste. 116
Corpus Christi, TX 78411
361-857-8991
landlord-resources.com

San Jacinto Title Services

520 Lawrence
Corpus Christi, TX 78401
361-985-2004
sanjacintotitle.com

Stonewater Properties

418 Peoples St, Ste. 400
Corpus Christi, TX 78401
361-877-7024
stonewaterproperties.com

WITMYER Coastal Bend Properties

1014 Forest Oak Drive
Portland, TX 78374
361-643-4400
har.com/witmyer-coast-
al-bend-propertie/broker_CCA-
RTX-090600

Retail/Wholesale

CORT, A Berkshire Hathaway Co.

3041 Holly Road
Corpus Christi, TX 78415
361-854-1121
cort.com

La Palmera

5488 S. Padre Island Dr.
Ste. 200
Corpus Christi, TX 78411
361-991-5718
lapalmera.com

Peerless Cleaners

3434 S. Staples & Rosedale
Corpus Christi, TX 78404
361-854-2625
peerlesscleaners.com

Seven Brew

3133 Caruth Blvd
Dallas, TX 75225
405-249-3232
tejasbrewistas.
7brewcareers.com



Sports and Recreation/Fitness

Corpus Christi Athletic Club

2101 Airline Rd
Corpus Christi, TX 78414
361-992-7100
corpuschristiathleticclub.com

Corpus Christi Hooks Baseball

734 E. Port Avenue
Corpus Christi, TX 78401
361-561-4665
cchooks.com

Transportation and Warehousing

McComb Relocation Services

3117 Cabaniss Rd,
Corpus Christi, TX 78415
361-888-5907
mccombrelocation.com

Waste Management Services

Frontier Waste Solutions

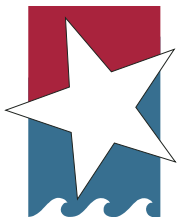
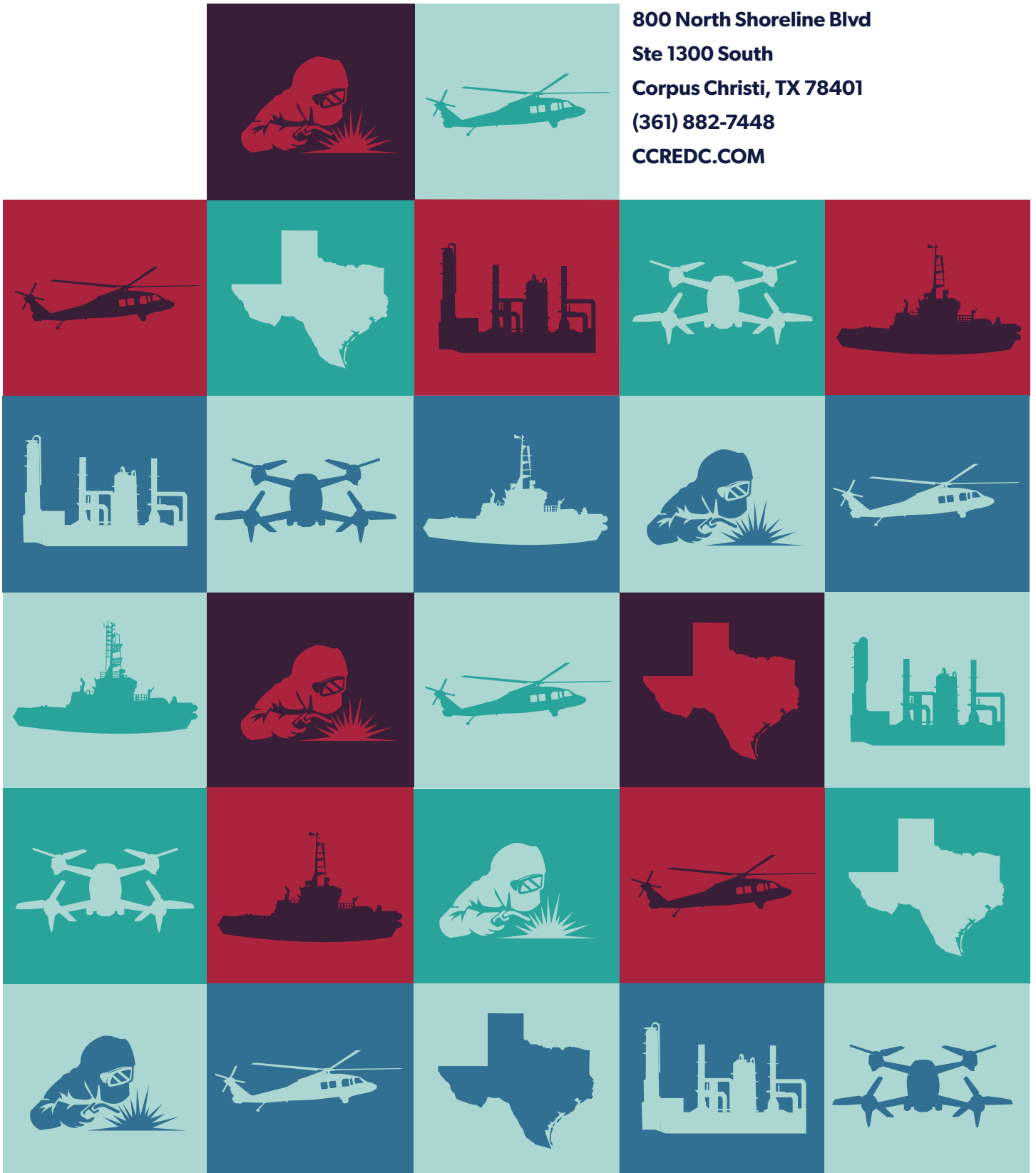
550 Flato Rd,
Corpus Christi, TX 78405
361-289-5588
frontierwaste.com

Republic Services

4414 Agnes St
Corpus Christi, TX 78405
361-698-5000
republicservices.com



800 North Shoreline Blvd
Ste 1300 South
Corpus Christi, TX 78401
(361) 882-7448
CCREDC.COM



Corpus Christi
REGIONAL ECONOMIC
DEVELOPMENT CORPORATION

